



# Department of Juvenile Justice

## Program Recidivism Update FY 1998 - 2005



Albert Murray  
Commissioner

Office of Technology and Information Services  
Planning, Research and Program Evaluation Section

**Program Recidivism Update  
for Fiscal Years 1998 - 2005**

Jeff Minor, Deputy Commissioner  
Doug Engle, Chief Information Officer

**Project Staff**

Eugene M. Pond, Statistical Research Analyst  
Ann Watkins, Operations Analyst III  
Joshua Cargile, Programmer/Analyst II  
Keith Parkhouse, Project Director II

December, 2006

Planning, Research and Program Evaluation  
Section

Department of Juvenile Justice

3408 Covington Highway

Decatur, Georgia 30032

<http://www.djj.state.ga.us/>

# Table of Contents

<b>Executive Summary</b> .....	3
Program Recidivism Rates .....	4
<b>Introduction</b> .....	6
Purpose .....	6
<b>Methodology</b> .....	7
Release Cohorts .....	7
<b>Results</b> .....	8
<b>Recidivism Trends</b> .....	8
One-Year Rates for Probation, STP, and Total Commitments .....	8
One-Year Rates for Commitments to YDC, Non-Secure Residential, and Home Placements.....	9
One-Year Rates for Regular Commitments and Designated Felons .....	10
Three-Year Rates for Probation, STP, and Total Commitments.....	11
Three-Year Rates for Commitments to YDC, Non-Secure Residential, and Home Placements .....	12
Three-Year Rates for Regular Commitments and Designated Felons .....	13
<b>Time-To-Failure Trends</b> .....	14
One-Year TTF for Probation, STP, and Total Commitments .....	14
One-Year TTF for Commitments to YDC, Non-Secure Residential, and Home Placements .....	15
One-Year TTF Trends for Regular Commitments and Designated Felons.....	16
<b>State Recidivism Comparisons</b> .....	17
<b>APPENDIX A</b> .....	19
Tables 1 – 6 .....	19
FY98 – FY05 Recidivism Rates by DJJ Region .....	19
<b>APPENDIX B</b> .....	27
Tables 7 – 13 .....	27
FY98 – FY05 Regional Recidivism Rates by DJJ Program.....	27
<b>APPENDIX C</b> .....	35
Tables 14 – 19 .....	35
FY98 – FY05 TTF and Recidivism Rates by DJJ Region .....	35
<b>APPENDIX D</b> .....	43
Offenses Defining Recidivism .....	43



## Executive Summary

**Purpose.** This report provides the most current measures of post-release offending for one, two, and three-years of follow-up for three major categories of programs (Probation, Short Term, and Commitment) that DJJ has operated over the past eight fiscal years. *See the table inserts for a summary of program recidivism rates.*

In this report, post-release offending was assessed by two measures:

- a **recidivism rate** which expresses the percentage of released youth that re-offended during a given follow-up period (1-year, 2-years, or 3-years) and,
- a **Time-To-Failure** (TTF) measure which expresses the average number of days elapsing between release and the first new offense that occurred during the follow-up period.

A recidivism rate and TTF provide different measures of post-release offending. For example, different programs could have identical one-year recidivism rates but differ significantly in how long youth took to re-offend during that year.

The 124,008 youth represented in this update were designated as belonging to a program's release cohort if they were placed "at risk" for re-offending in the community during the same fiscal year. Eight release cohorts are included in the FY1998 – FY2005 period.

Both measures of post-release offending are also provided for specific types of Commitment programs:

- Non-Secure Residential,
- Home,
- YDC Commitments,
- Regular Commitments, and
- Designated Felons.

**Recidivism Rate Summary FY1998 - FY2005**

DJJ Program	Youth Released	Av. 1-yr rates (%)	Av. 2-yr rates (%)	Av. 3-yr rates (%)
Probation	68,048	15.0	24.8	30.5
STP (Total)	34,681	36.8	48.6	54.8
Commitment (Total)	21,279	28.4	42.3	50.1
All Programs Combined	124,008	23.4	34.5	40.7

**Total Program Recidivism Rates FY98 - FY05**

Youth Released by FY	1-yr rate (%)	2-yr rate (%)	3-yr rate (%)
FY98	19.0	31.9	40.9
FY99	22.7	34.7	41.3
FY00	23.0	35.0	41.5
FY01	26.5	37.7	43.3
FY02	23.4	32.2	36.4
FY03	27.3	36.7	40.4
FY04	25.9	33.7	Inc
FY05	20.0	Inc	Inc
% Change from FY98 to Most Recent	1.0%	1.8%	-0.5%

Inc: Follow-up period incomplete

**Total Program Recidivism Rates by Region**

Regions	Youth Released	Av. 1-yr rates (%)	Av. 2-yr rates (%)	Av. 3-yr rates (%)
Region 1	19,604	21.2	31.4	37.7
Region 2	25,387	21.0	32.3	38.5
Region 3	26,101	24.5	35.1	41.3
Region 4	27,238	25.5	37.7	44.0
Region 5	25,678	23.9	35.2	40.7
TOTAL	124,008	23.4	34.5	40.7

## Program Recidivism Rates

In determining if the changes listed below were statistically significant, we compared a program's 1-year recidivism rate and TTF in FY05 with their average over the FY98 - FY04 period (all previous cohorts with 1-year of follow-up).. In a similar fashion, to determine if a program's 3-year recidivism rate changed significantly, we compared the rate in FY03 (the most current cohort with three years of follow-up) with the program's average over the FY98 - FY02 period (all previous cohorts with 3-years of follow-up).

### One-Year Recidivism Rates in FY2005

On average, DJJ programs showed a significant **3.8% decrease** in recidivism (down from 23.8% to 20.0%).

- **Probation** showed a significant **4.0% increase** in recidivism (up from 14.5% to 18.5%).
- **Short-Term Programs (STP)** showed a significant **16.0% decrease** in recidivism (down from 38.2% to 22.2%).
- **Total Commitments** showed a significant **7.4% decrease** in recidivism (down from 29.4% to 22.0%).
  - **YDC Commitments** showed a significant **6.8% decrease** in recidivism (down from 28.8% to 22.0%).
  - **Non-Secure Residential Commitments** showed a significant **8.9% decrease** in recidivism (down from 28.2% to 19.3%).
  - **Home Commitments** showed a significant **7.4% decrease** in recidivism (down from 32.3% to 24.9%).
  - **Regular Commitments** showed a significant **6.7% decrease** in recidivism (down from 31.2% to 24.5%).
  - **Designated Felon Commitments** showed a significant **4.1% decrease** in recidivism (down from 18.4% to 14.3%).

### Three-Year Recidivism Rates

- **Probation** showed a significant **4.9% increase** in recidivism (up from 29.8% to 34.7%).
- **Short-Term Programs (STP)** showed a significant **9.5% decrease** in recidivism (down from 56.2% to 46.7%).
- **Total Commitments** showed a significant **4.2% decrease** in recidivism (down from 50.9% to 46.7%).
  - **YDC Commitments** showed no significant change in recidivism (from 52.5% to 53.8%).
  - **Non-Secure Residential Commitments** showed no significant change in recidivism (from 48.3% to 45.4%).
  - **Home Commitments** showed a significant **9.9% decrease** in recidivism (down from 50.7% to 40.8%).
  - **Regular Commitments** showed a significant **5.4% decrease** in recidivism (down from 52.6% to 47.2%).
  - **Designated Felon Commitments** showed no significant change in recidivism (from 41.2% to 37.0%).

### One-Year Time-To-Failure in FY2005

On average, youth in DJJ programs took significantly longer (18-days) to recidivate in FY2005 than they did, on average, in the previous seven years (up from 148 days to 166 days).

- **Probation.** While youth placed on probation recidivated 4-days sooner in FY2005 than they did in the previous seven years (down from 171-days to 167-days), the change was not significant.

- **Short-Term Programs (STP)**. The TTF for youth in STP showed a significant *increase* of 41-days in FY2005 (up from 132-days to 173-days).
- **Total Commitments**. The TTF for committed youth showed a significant *increase* of 13-days in FY2005 (up from 146-days to 159-days).
  - **YDC Commitments** showed an increase of 6-days in TTF in FY2005 (up from 160-days to 166-days); although the change was not significant.
  - **Non-Secure Residential Commitments** showed an increase of 13-days in TTF in FY2005 (up from 156-days to 169-days), although the change was not significant.
  - **Home Commitments** showed a significant *increase* of 39-days in TTF in FY2005 (up from 109-days to 148-days).
  - **Regular Commitments** showed a significant *increase* of 12-days in TTF in FY2005 (up 145-days to 157-days).
  - **Designated Felon Commitments** showed an increase of 9-days in TTF in FY2005 (up from 169-days to 178-days), although the change was not significant.

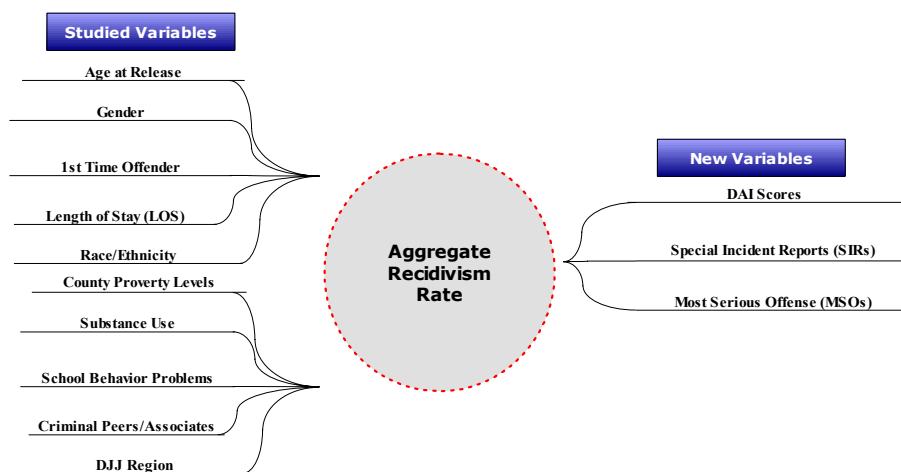
## Introduction

Recidivism, or post-release criminality, is measured in terms of the time elapsing between two events. Measurement starts the first day a youth becomes “at risk” for re-offending in the community and ends the day a new qualifying offense occurs. States that report recidivism figures for juveniles vary widely in their definition of what constitutes “release,” “recidivism,” as well as the length of the measurement or follow-up periods they employ. Their outcomes, however, are generally expressed as a “recidivism rate”; which is simply another way of saying the percentage of releases that re-offended or failed at some point during a state's designated follow-up period.

Recent state recidivism reports often include cautionary notes about comparing recidivism rates. There is good reason for this practice. While recidivism rates for different programs and release methods can be compared, differences cannot be automatically attributed to the program/release method. A recidivism rate reflects the aggregate outcome of a quite complex process. Since recidivism rates are closely related to the length of the follow-up period, longer periods at risk (1-year vs. 2-years or 3-years) typically show higher levels of failure. Before we can safely compare recidivism rates, we need to ensure that the measurement processes are comparable in terms of:

- The definition of a failure or recidivating event,
- The amount of time allowed for tracking offenders to determine post-release criminality,
- The basic characteristics of the offenders released during a specified period of time and,
- How basic offender characteristics and other factors affected the aggregate rate.

In DJJ’s 2005 recidivism report a number of youth characteristics, demographic, and criminal history related factors were identified as influencing our young offender’s recidivism rates. A number of these variables were selected for further examination in this study.



## Purpose

To update the 1-year, 2-year, and 3-year recidivism rates and Time-To-Failure (TTF) measures for DJJ’s three major types of programs: Probation, Short Term (STP), and Commitments (including Non-Secure Residential Commitments, Home Commitments, YDC commitments, Regular Commitments, and Designated Felons).



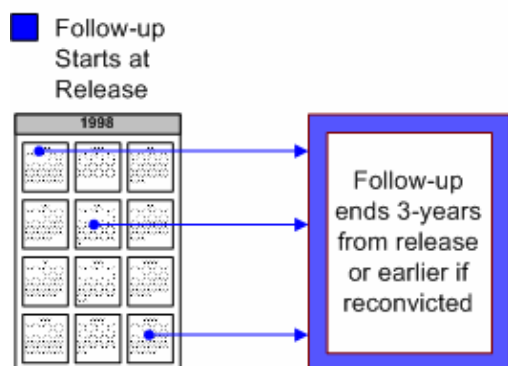
## Methodology

DJJ's definition of a recidivist specifies three key features about how we measure recidivism:

- Requires an adjudication on a new delinquent charge in juvenile court or a conviction as an adult,
- Requires a "standard" three-year follow-up period to determine post-release criminality for released youth and,
- Implies dual searches of records from DJJ's Juvenile Tracking System (JTS) and Georgia's Department of Corrections to determine releases with a new adjudication on a delinquent charge or an Adult Probation or Adult Prison sentence (see Appendix C for a list of qualifying offenses).

The Georgia Department of Juvenile Justice defines a recidivist as a youthful offender who has been adjudicated on a new delinquent charge or convicted as an adult within three years after release from, or while under an active juvenile court order of Probation, Commitment, or a Short Term Program (STP).

### Release Cohort Follow-up



### Release Cohorts

All youth released from any type of program during the same fiscal year were designated as belonging to that fiscal year's release cohort, e.g., the FY98 Probation cohort, the FY05 STP cohort, etc.

All youth in the FY98 - FY03 cohorts were followed-up for 3-years after their release date (their first day at "risk" in their community + 1,095 days). For example, all youth released from the five types of programs during the period from July 1, 1997 to June 30, 1998 (the FY98 cohorts) were tracked until June 30, 2001.

Youth released from the five programs during the period from July 1, 1998 to June 30, 1999 (the FY99 cohorts) were tracked until June 30, 2002.

Youth released from the programs during the period from July 1, 1999 to June 30, 2000 (the FY00 cohorts) were tracked until June 30, 2003. Currently only those youth released during FY98 - FY03 could be tracked for a full three years. Youth released from programs during FY04 were tracked for 2-years; those released during FY05 were tracked for 1-year.

### Variables

The data set for the eight program cohorts contained 130 variables directly extracted or subsequently computed from data in DJJ's JTS record system. The variables represented various youth and offense characteristics, the event dates necessary to calculate the TTF and recidivism measures, Length of Stay (LOS), DAI scores and categories, ten types of Special Incident Reports (SIRs), as well as various county level population descriptors from the 2000 Census.

SPSS (*Statistical Package for the Social Sciences*, V.14) routines were used to conduct cross-tabulations, regression analyses, and ANOVA (analysis of variance) tests between the TTF measures and recidivism rates.

The significance level set for rejecting a hypothesis of no difference between event measures (the "null" hypothesis) was set at the 5%-level ( $P = .05$ , two-tailed test).

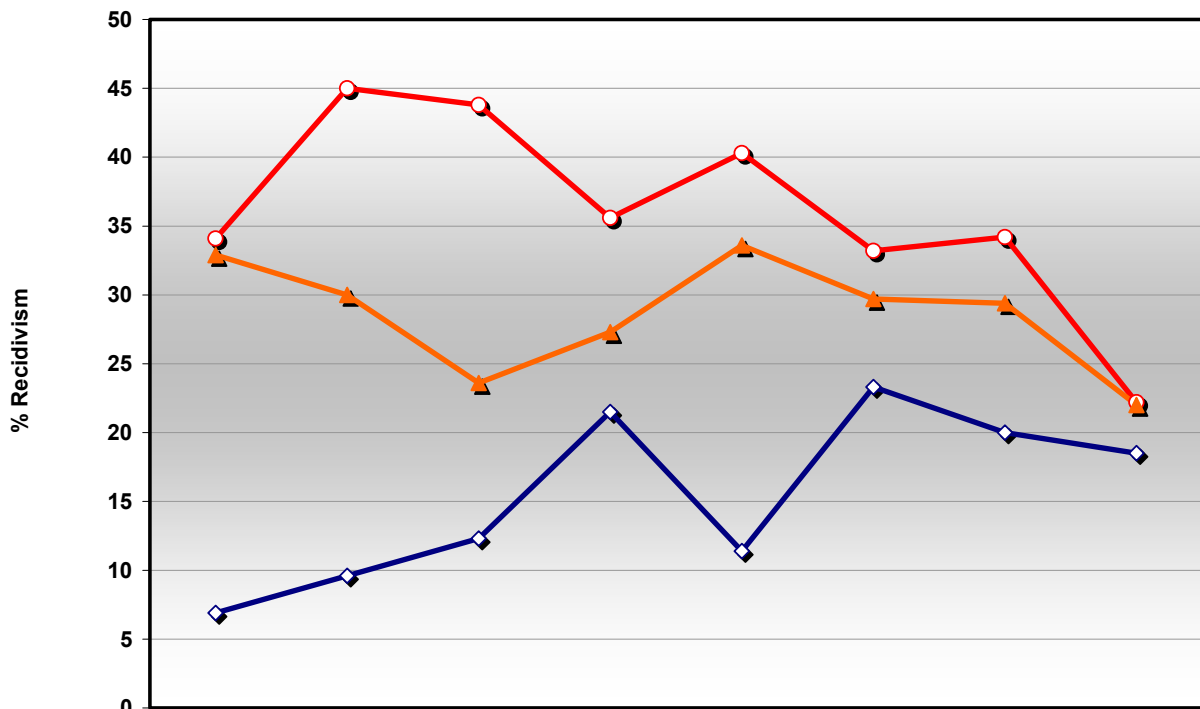
## Results

### Recidivism Trends

**Note:** Significant decreases in recidivism rates represent desirable outcomes; however, only significant *increases* in the Time-To-Failure measure are desirable. To determine if changes were statistically significant, we compared a program's 1-year recidivism rate and TTF in FY05 with their averages for FY98 through FY04 in an analysis of variance procedure. In a similar fashion, to determine if a program's 3-year recidivism rate changed significantly, we compared the rate in FY03 (the most current cohort with three years of follow-up) with the program's average for FY98 through FY02 (all previous cohorts with 3-years of follow-up).

### Recidivism Rates

#### One-Year Rates for Probation, STP, and Total Commitments



	FY98	FY99	FY00	FY01	FY02	FY03	FY04	FY05
◆ Probation	6.9	9.6	12.3	21.5	11.4	23.3	20.0	18.5
○ STP	34.1	45.0	43.8	35.6	40.3	33.2	34.2	22.2
▲ Total Commitments	32.9	30.0	23.6	27.3	33.6	29.7	29.4	22.0

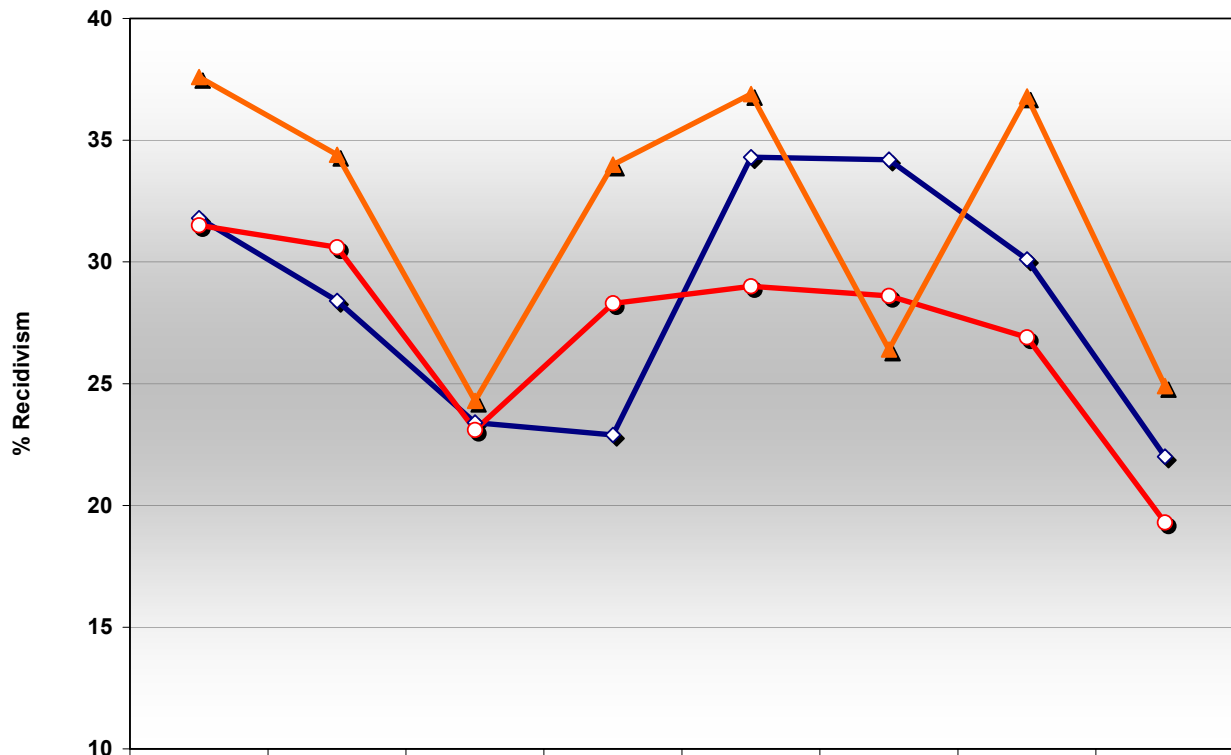
#### 1-Year Recidivism Rate Comparisons

Program	Norm Period Rate	Comparison Year Rate	Rate Change	Significant Change*
	Av. FY98-FY04	FY05		
Probation	14.5	18.5	4.0	YES
STP	38.2	22.2	-16.0	YES
Commitment	29.4	22	-7.4	YES

\* p < .05

## Recidivism Rates

### One-Year Rates for Commitments to YDC, Non-Secure Residential, and Home Placements



	FY98	FY99	FY00	FY01	FY02	FY03	FY04	FY05
YDC	31.8	28.4	23.4	22.9	34.3	34.2	30.1	22.0
NS Residential	31.5	30.6	23.1	28.3	29.0	28.6	26.9	19.3
Home	37.6	34.4	24.3	34.0	36.9	26.4	36.8	24.9

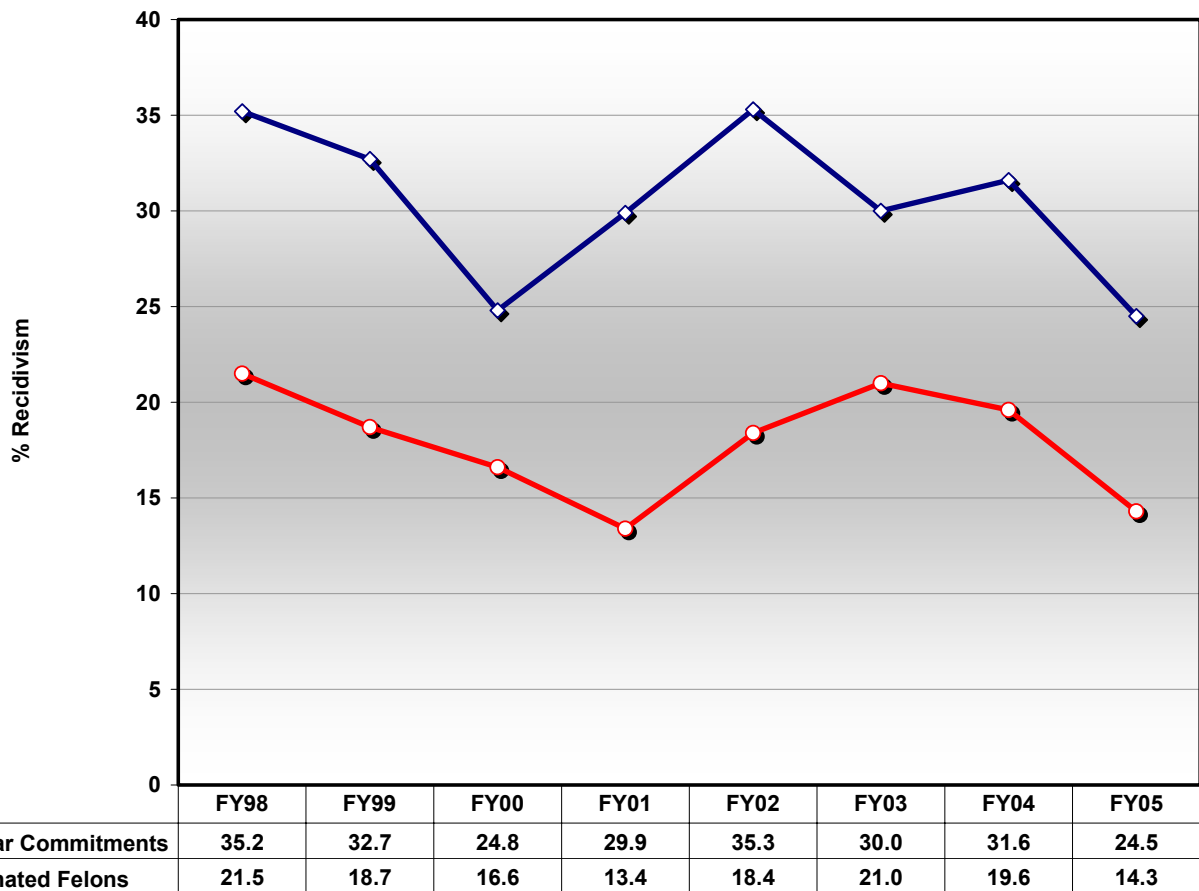
#### 1-Year Recidivism Rate Comparisons

Program	Norm Period Rate	Comparison Year Rate	Rate Change	Significant Change*
	Av. FY98-FY04	FY05		
YDC	28.8	22	-6.8	YES
NS Residential	28.2	19.3	-8.9	YES
Home	32.3	24.9	-7.4	YES

\* p < .05

## Recidivism Rates

### One-Year Rates for Regular Commitments and Designated Felons



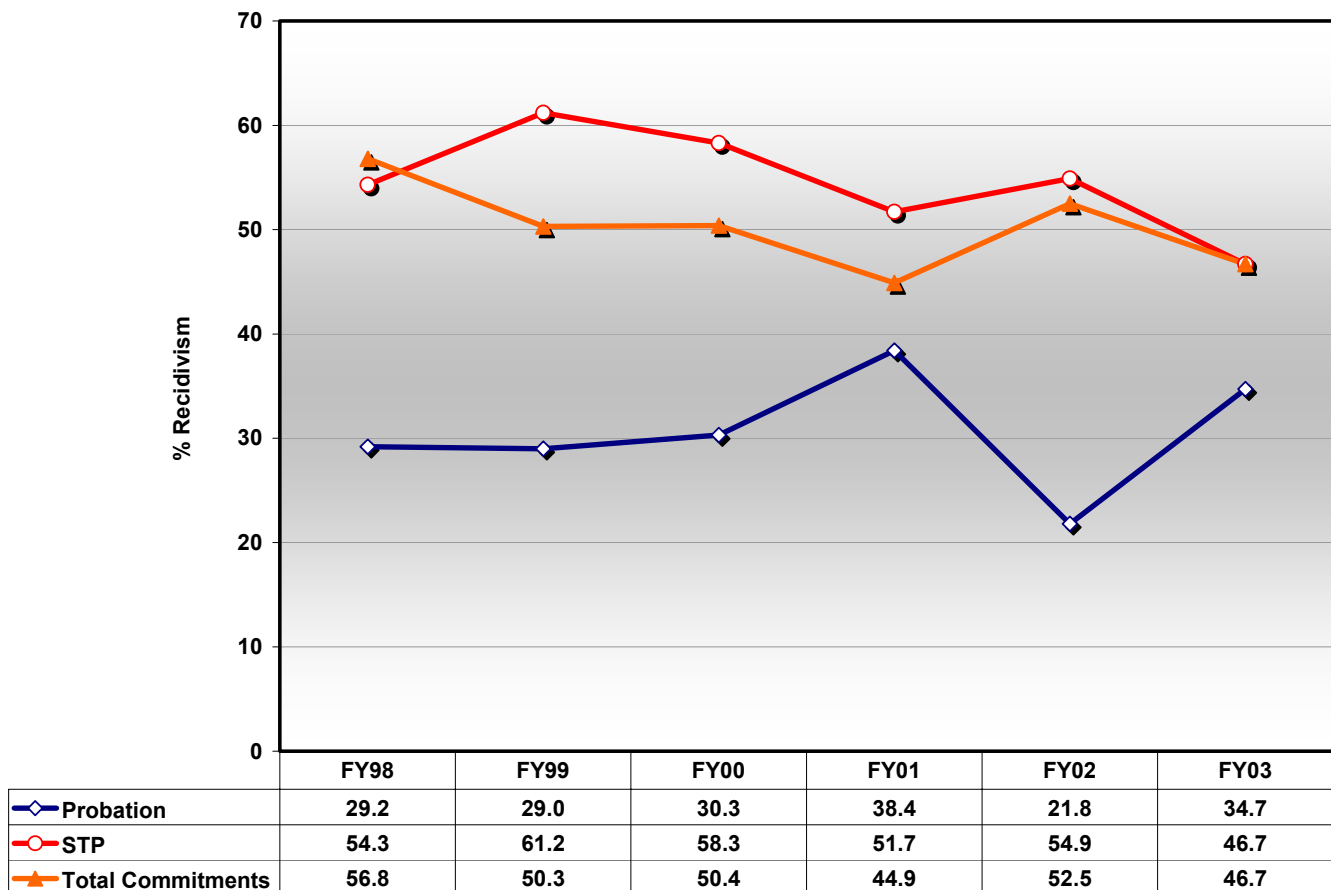
#### 1-Year Recidivism Rate Comparisons

Program	Norm Period Rate	Comparison Year Rate	Rate Change	Significant Change*
	Av. FY98-FY04	FY05		
Reg. Commitments	31.2	24.5	-6.7	YES
Designated Felons	18.4	14.3	-4.1	YES

\* p < .05

## Recidivism Rates

### Three-Year Rates for Probation, STP, and Total Commitments

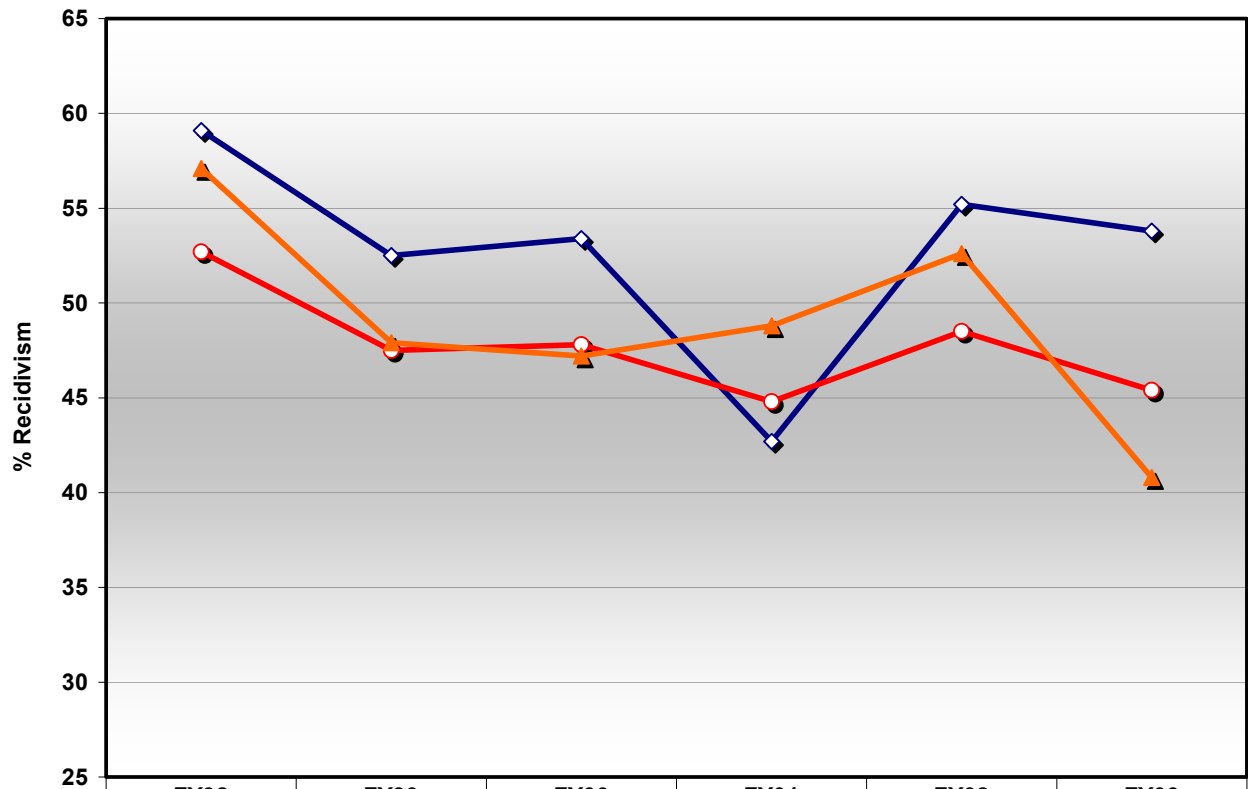


### 3-Year Recidivism Rate Comparisons

Program	Norm Period Rate	Comparison Year Rate	Rate Change	Significant Change*
	Av. FY98-FY02	FY03		
Probation	29.8	34.7	4.9	YES
STP	56.2	46.7	-9.5	YES
Commitment	50.9	46.7	-4.2	YES

\* p < .05

## Three-Year Rates for Commitments to YDC, Non-Secure Residential, and Home Placements



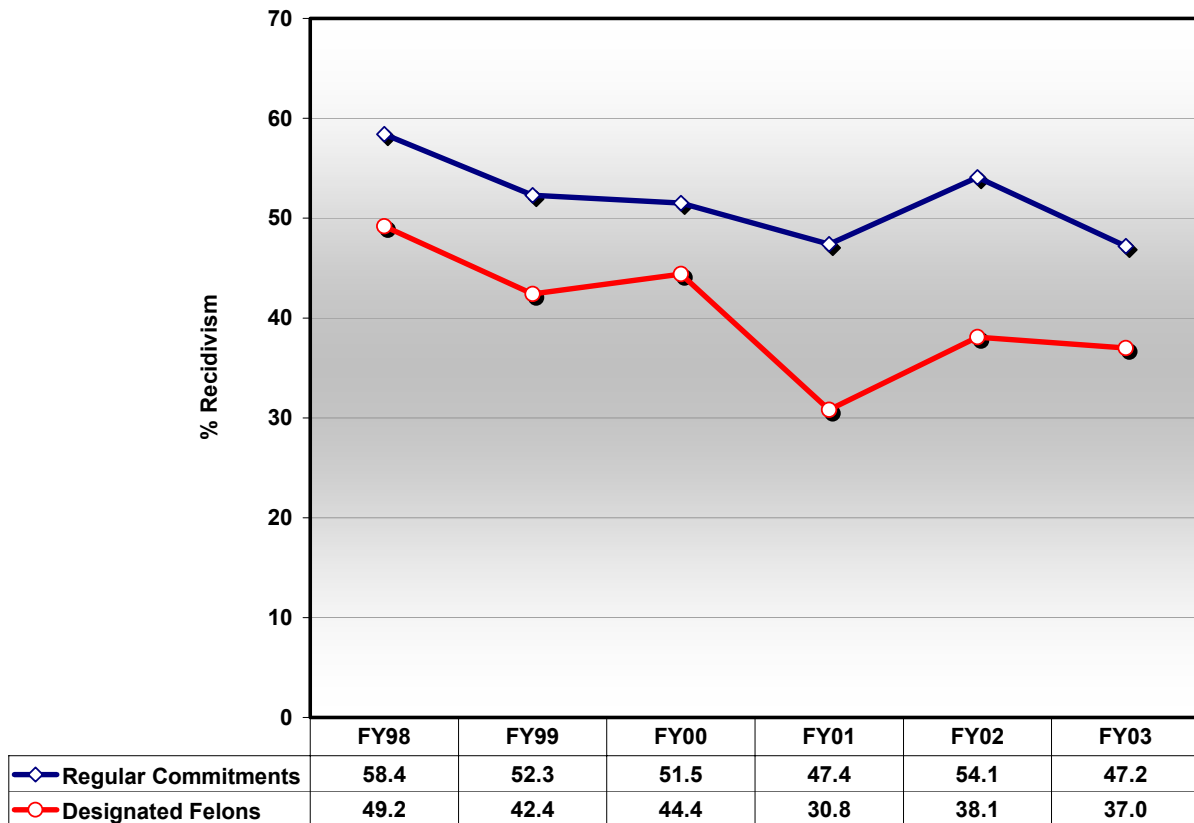
	FY98	FY99	FY00	FY01	FY02	FY03
YDC	59.1	52.5	53.4	42.7	55.2	53.8
NS Residential	52.7	47.5	47.8	44.8	48.5	45.4
Home	57.1	47.9	47.2	48.8	52.6	40.8

### 3-Year Recidivism Rate Comparisons

Program	Norm Period Rate	Comparison Year Rate	Rate Change	Significant Change*
	Av. FY98-FY02	FY03		
YDC	52.5	53.8	1.3	NO
NS Residential	48.3	45.4	-2.9	NO
Home	50.7	40.8	-9.9	YES

\* p < .05

## Three-Year Rates for Regular Commitments and Designated Felons

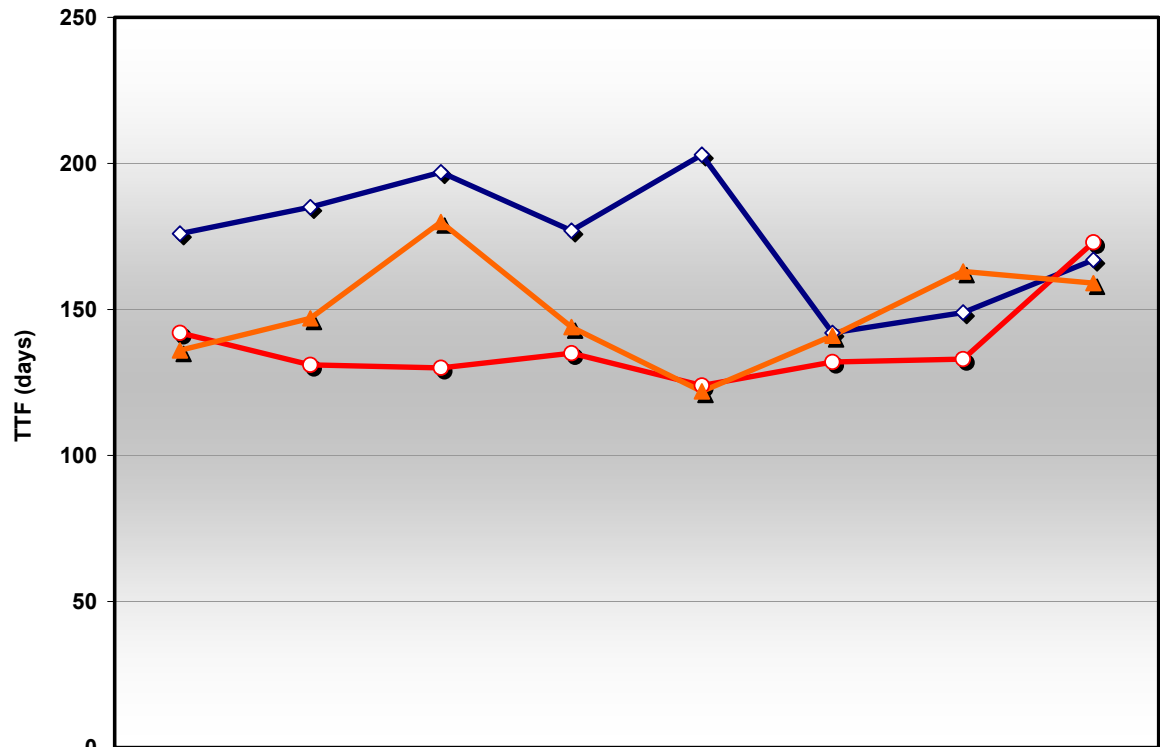


3-Year Recidivism Rate Comparisons				
Program	Norm Period Rate	Comparison Year Rate	Rate Change	Significant Change*
	Av. FY98-FY02	FY03		
Reg. Commitments	52.6	47.2	-5.4	YES
Designated Felons	41.2	37.0	-4.2	NO

\* p < .05

## Time-To-Failure Trends

### One-Year TTF for Probation, STP, and Total Commitments



	FY98	FY99	FY00	FY01	FY02	FY03	FY04	FY05
◆ Probation	176	185	197	177	203	142	149	167
○ STP	142	131	130	135	124	132	133	173
▲ Total Commitments	136	147	180	144	122	141	163	159

#### 1-Year TTF Comparisons

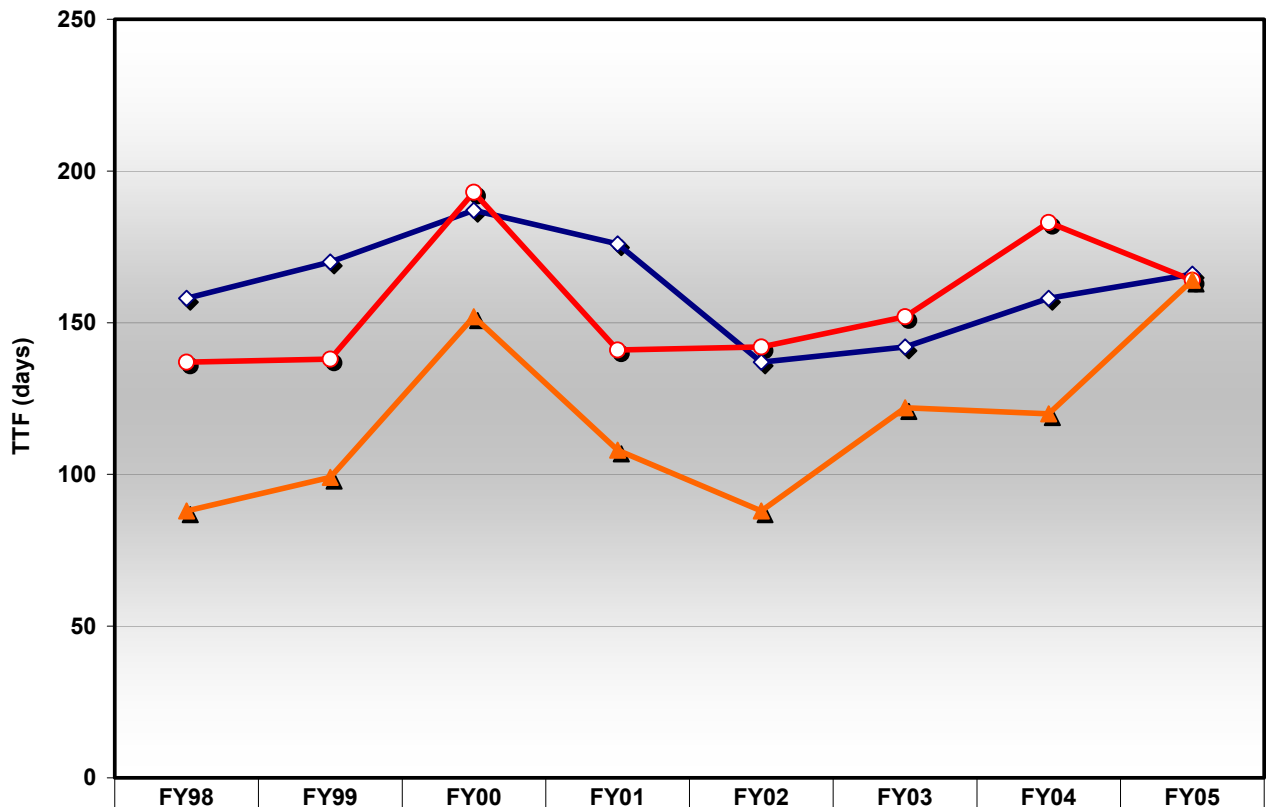
Program	Norm Period Rate	Comparison Year Rate	Rate Change	Significant Change*
	Av. FY98-FY04	FY05		
Probation	171	167	-4	NO
STP	132	173	41	YES
Commitment	146	159	13	YES

\* p < .05



## Time-To-Failure Trends

### One-Year TTF for Commitments to YDC, Non-Secure Residential, and Home Placements



	FY98	FY99	FY00	FY01	FY02	FY03	FY04	FY05
◆ YDC	158	170	187	176	137	142	158	166
○ NS Residential	137	138	193	141	142	152	183	164
▲ Home	88	99	152	108	88	122	120	164

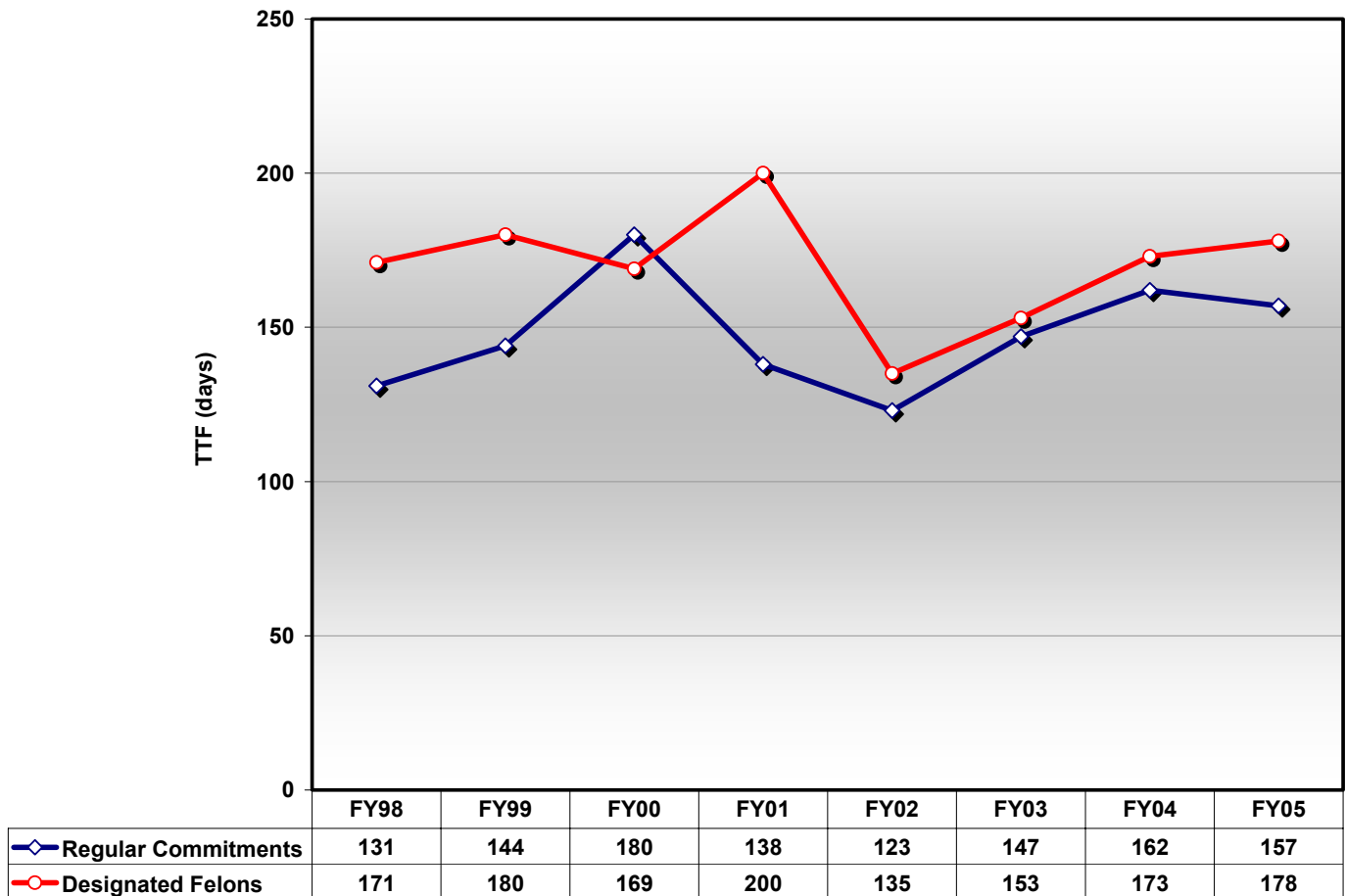
#### 1-Year TTF Comparisons

Program	Norm Period Rate	Comparison Year Rate	Rate Change	Significant Change*
	Av. FY98-FY04	FY05		
YDC	160	166	6	NO
NS Residential	156	169	13	NO
Home	109	148	39	YES

\* p < .05

## Time-To-Failure Trends

### One-Year TTF Trends for Regular Commitments and Designated Felons



#### 1-Year TTF Comparisons

Program	Norm Period Rate	Comparison Year Rate	Rate Change	Significant Change*
	Av. FY98-FY04	FY05		
Reg. Commitments	145	157	12	YES
Designated Felons	169	178	9	NO

\* p < .05

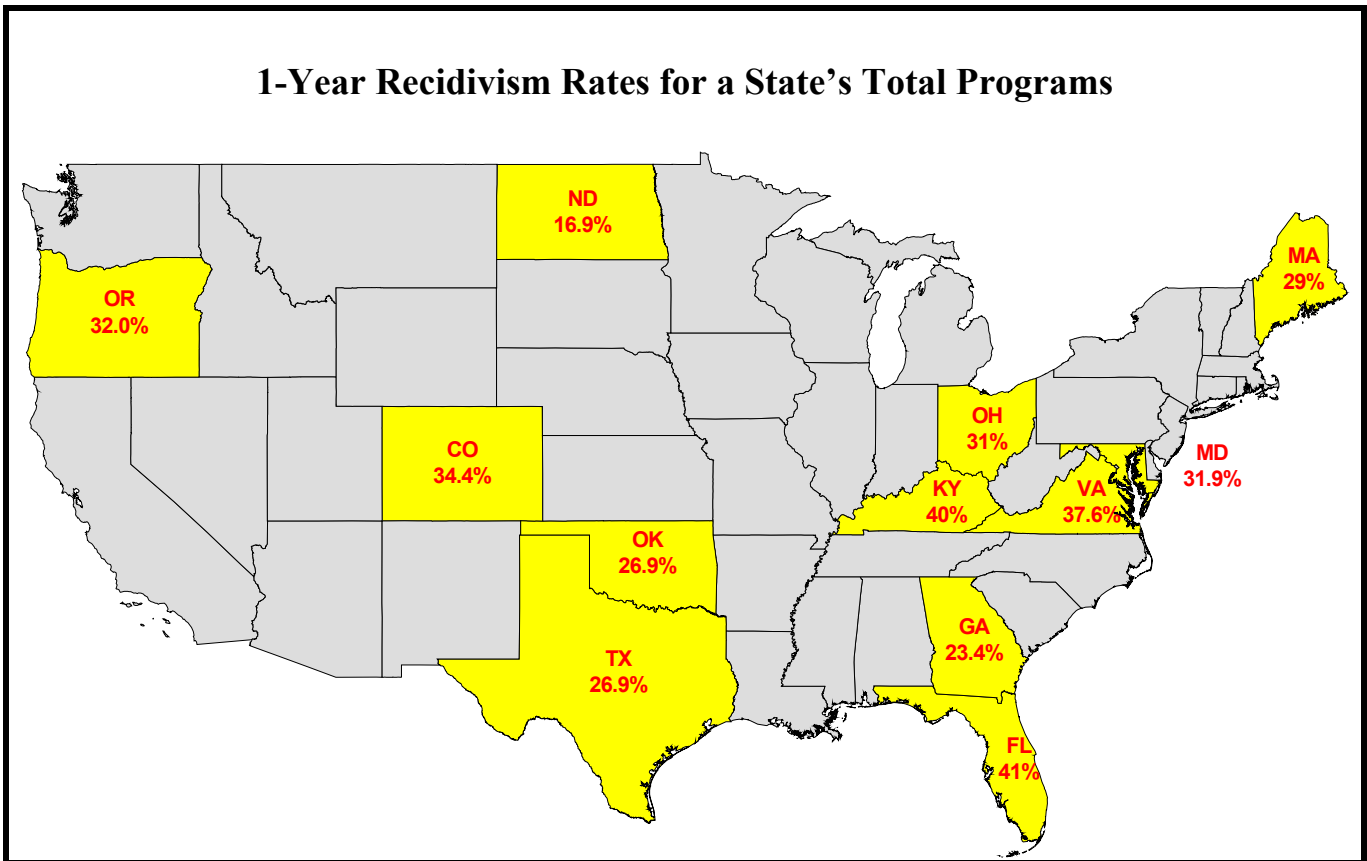
## State Recidivism Comparisons

Relatively few states report they measure juvenile recidivism. A recent survey (1999) of juvenile justice agencies conducted by the Florida Department of Juvenile Justice, found only twenty-six states using some method to assess juvenile recidivism. As noted previously, states that report recidivism rates vary widely in their definition of "release," "recidivism," and the length of follow-up periods used to calculate their rates.

**Recidivism measures and definitions should be applied consistently to any programs or populations studied *within* a state....It is probably unwise and inadvisable to look at the juvenile recidivism rate for one state and compare it to the rate in another state --- the populations, juvenile justice statutes, and measurement needs of each state are too different.**

Virginia DJJ, April 2005

### 1-Year Recidivism Rates for a State's Total Programs





# **APPENDIX A**

## **Tables 1 – 6**

### **FY98 – FY05 Recidivism Rates by DJJ Region**

Table 1

## All DJJ Regions: Program Recidivism Rates for FY98 - FY05 Cohorts

Type of Program	Follow-Up Period	Number of Releases, Failures and Cumulative % Recidivism by Cohort								
		FY98	FY99	FY00	FY01	FY02	FY03	FY04	FY05	Totals (FY98-05)
Probation (A)	Releases	9,567	9,770	9,299	8,376	8,104	7,534	7,390	8,008	68,048
	% in 1yr.	6.9	9.6	12.3	21.5	11.4	23.3	20.0	18.5	15.0
	Failed	657	934	1,144	1,801	927	1,754	1,479	1,479	10,175
	% in 2yrs.	19.2	21.7	24.0	33.0	18.9	31.4	27.7	Inc	24.8
	Failed	1,180	1,189	1,089	959	607	609	571	Inc	6,204
	% in 3yrs.	29.2	29.0	30.3	38.4	21.8	34.7	Inc	Inc	30.5
STP (B)	Failed	955	707	587	460	233	253	Inc	Inc	3,195
	Releases	5,332	4,944	4,738	4,409	4,239	3,896	4,041	3,082	34,681
	% in 1yr.	34.1	45.0	43.8	35.6	40.3	33.2	34.2	22.2	36.8
	Failed	1,820	2,225	2,073	1,569	1,707	1,294	1,383	685	12,756
	% in 2yrs.	47.3	56.0	52.9	46.0	50.2	43.4	42.1	Inc	48.6
	Failed	700	546	432	458	419	398	319	Inc	3,272
YDC Commitments (C)	% in 3yrs.	54.3	61.2	58.3	51.7	54.9	46.7	Inc	Inc	54.8
	Failed	376	253	257	252	200	126	Inc	Inc	1,464
	Releases	1,235	1,350	1,352	1,201	1,011	859	743	737	8,488
	% in 1yr.	31.8	28.4	23.4	22.9	34.3	34.2	30.1	22.0	28.2
	Failed	395	384	318	275	347	294	224	162	2,399
	% in 2yrs.	49.2	45.0	43.3	36.2	47.8	48.5	38.2	Inc	44.1
Non-Secure Residential Commitments (D)	Failed	216	233	269	164	138	123	60	Inc	1,203
	% in 3yrs.	59.1	52.5	53.4	42.7	55.2	53.8	Inc	Inc	52.7
	Failed	124	104	135	82	75	45	Inc	Inc	565
	Releases	766	707	737	805	703	1,222	1,442	1,137	7,519
	% in 1yr.	31.5	30.6	23.1	28.3	29.0	28.6	26.9	19.3	26.8
	Failed	241	216	170	230	204	350	388	220	2,019
Home Commitments (E)	% in 2yrs.	45.0	40.7	39.2	39.3	41.1	40.1	35.9	Inc	39.7
	Failed	104	73	123	90	85	140	131	Inc	746
	% in 3yrs.	52.7	47.5	47.8	44.8	48.5	45.4	Inc	Inc	47.6
	Failed	59	48	67	45	52	65	Inc	Inc	336
	Releases	513	390	671	674	739	791	419	1,075	5,272
	% in 1yr.	37.6	34.4	24.3	34.0	36.9	26.4	36.8	24.9	30.8
Combined Commitment Programs (C-E)	Failed	193	134	163	229	273	209	154	268	1,623
	% in 2yrs.	48.9	43.8	39.5	43.2	45.9	37.2	43.0	Inc	42.7
	Failed	58	37	102	62	66	85	26	Inc	436
	% in 3yrs.	57.1	47.9	47.2	48.8	52.6	40.8	Inc	Inc	48.7
	Failed	42	16	52	38	51	29	Inc	Inc	228
	Releases	2,514	2,447	2,760	2,680	2,453	2,872	2,604	2,949	21,279
All Programs Combined (A-E)	% in 1yr.	32.9	30.0	23.6	27.3	33.6	29.7	29.4	22.0	28.4
	Failed	829	734	651	734	824	853	766	650	6,041
	% in 2yrs.	47.9	43.6	41.3	38.9	45.3	41.8	37.7	Inc	42.3
	Failed	378	343	494	316	289	348	217	Inc	2,385
	% in 3yrs.	56.8	50.3	50.4	44.9	52.5	46.7	Inc	Inc	50.1
	Failed	225	168	254	165	178	139	Inc	Inc	1,129
All Programs Combined (A-E)	Releases	17,413	17,161	16,797	15,465	14,796	14,302	14,035	14,039	124,008
	% in 1yr.	19.0	22.7	23.0	26.5	23.4	27.3	25.9	20.0	23.4
	Failed	3,306	3,893	3,868	4,104	3,458	3,901	3,628	2,814	28,972
	% in 2yrs.	31.9	34.7	35.0	37.7	32.2	36.7	33.7	Inc	34.5
	Failed	2,258	2,078	2,015	1,733	1,315	1,355	1,107	Inc	11,861
	% in 3yrs.	40.9	41.3	41.5	43.3	36.4	40.4	Inc	Inc	40.7
	Failed	1,556	1,128	1,098	877	611	518	Inc	Inc	5,788

Inc=Follow-up period incomplete.

**Table 2**  
**Region 1: Recidivism Rates for FY98 - FY05 Programs**

Type of Program	Follow-Up Period	Number of Releases, Failures and Cumulative % Recidivism by Cohort								
		FY98	FY99	FY00	FY01	FY02	FY03	FY04	FY05	Totals (FY98-05)
	Releases	1,535	1,469	1,566	1,281	1,323	1,254	1,417	1,563	11,408
Probation (A)	% in 1yr.	7.4	9.3	12.4	22.2	11.3	18.2	15.3	17.0	13.9
	Failed	113	136	194	285	150	228	217	265	1,588
	% in 2yrs.	18.4	20.0	22.2	30.7	17.2	24.9	22.7	Inc	22.1
	Failed	170	158	153	108	78	84	104	Inc	855
	% in 3yrs.	28.0	27.4	28.2	36.2	19.5	28.1	Inc	Inc	27.9
	Failed	147	108	95	71	30	40	Inc	Inc	491
STP (B)	Releases	810	676	696	593	563	618	703	479	5,138
	% in 1yr.	29.3	42.5	44.5	32.4	36.2	28.0	29.6	21.9	33.4
	Failed	237	287	310	192	204	173	208	105	1,716
	% in 2yrs.	44.3	54.0	53.9	45.9	46.5	36.6	38.3	Inc	45.7
	Failed	122	78	65	80	58	53	61	Inc	517
	% in 3yrs.	51.6	59.2	59.8	51.6	51.9	40.1	Inc	Inc	52.6
	Failed	59	35	41	34	30	22	Inc	Inc	221
YDC Commitments (C)	Releases	155	176	199	159	142	83	72	59	1,045
	% in 1yr.	33.5	30.7	23.1	20.1	40.1	39.8	20.8	18.6	28.7
	Failed	54	54	46	32	57	33	15	11	302
	% in 2yrs.	51.6	43.8	42.7	34.0	54.2	50.6	25.0	Inc	43.9
	Failed	30	23	39	22	21	9	3	Inc	147
	% in 3yrs.	58.1	51.7	52.8	41.5	59.2	54.2	Inc	Inc	52.6
	Failed	11	14	20	13	7	3	Inc	Inc	68
Non-Secure Residential Commitments (D)	Releases	109	104	167	122	106	200	228	183	1,219
	% in 1yr.	28.4	35.6	22.8	27.0	25.5	32.0	25.9	19.1	26.6
	Failed	31	37	38	34	27	64	59	35	325
	% in 2yrs.	41.3	45.2	35.9	33.6	39.6	41.5	32.9	Inc	37.9
	Failed	14	10	23	8	15	19	16	Inc	105
	% in 3yrs.	48.6	53.8	42.5	37.7	44.3	46.0	Inc	Inc	45.2
	Failed	8	9	12	5	5	9	Inc	Inc	48
Home Commitments (E)	Releases	70	52	72	115	110	140	68	167	794
	% in 1yr.	27.1	36.5	22.2	31.3	27.3	27.9	36.8	26.9	28.8
	Failed	19	19	16	36	30	39	25	45	229
	% in 2yrs.	38.6	48.1	33.3	40.0	38.2	42.9	45.6	Inc	40.7
	Failed	8	6	8	10	12	21	6	Inc	71
	% in 3yrs.	50.0	53.8	41.7	47.8	42.7	46.4	Inc	Inc	46.5
	Failed	8	3	6	9	6	5	Inc	Inc	37
Combined Commitment Programs (C-E)	Releases	334	332	438	396	358	423	368	409	3,058
	% in 1yr.	30.5	33.1	22.8	25.5	31.8	32.2	26.9	22.2	27.9
	Failed	104	110	100	102	114	136	99	91	856
	% in 2yrs.	45.5	44.9	38.6	35.6	45.0	43.7	33.7	Inc	40.8
	Failed	52	39	70	40	48	49	25	Inc	323
	% in 3yrs.	53.3	52.7	47.0	42.2	49.7	47.8	Inc	Inc	48.5
	Failed	27	26	38	27	18	17	Inc	Inc	153
All Programs Combined (A-E)	Releases	2,679	2,477	2,700	2,270	2,244	2,295	2,488	2,451	19,604
	% in 1yr.	16.9	21.5	22.4	25.5	20.9	23.4	21.1	18.8	21.2
	Failed	454	533	604	579	468	537	524	461	4,160
	% in 2yrs.	29.6	32.6	33.0	35.5	29.0	31.5	28.7	Inc	31.4
	Failed	344	275	288	228	184	186	190	Inc	1,695
	% in 3yrs.	38.3	39.4	39.4	41.3	32.4	34.9	Inc	Inc	37.7
	Failed	233	169	174	132	78	79	Inc	Inc	865

Inc=Follow-up period incomplete.

**Table 3**  
**Region 2: Recidivism Rates for FY98 - FY05 Programs**

Type of Program	Follow-Up Period	Number of Releases, Failures and Cumulative % Recidivism by Cohort								
		FY98	FY99	FY00	FY01	FY02	FY03	FY04	FY05	Totals (FY98-05)
Probation (A)	Releases	2,204	2,303	2,098	2,077	2,189	1,987	2,000	1,793	16,651
	% in 1yr.	6.0	9.6	13.2	20.2	11.6	25.3	20.5	16.6	15.1
	Failed	132	221	276	419	255	502	410	298	2,513
	% in 2yrs.	19.6	21.7	25.9	33.2	19.6	32.5	27.8	Inc	25.5
	Failed	300	279	268	271	174	144	145	Inc	1,581
	% in 3yrs.	30.1	28.7	32.7	39.5	22.2	35.7	Inc	Inc	31.3
STP (B)	Failed	232	162	143	130	56	65	Inc	Inc	788
	Releases	811	834	804	730	726	640	759	630	5,934
	% in 1yr.	30.5	44.8	42.0	34.2	37.6	33.8	32.8	21.1	35.1
	Failed	247	374	338	250	273	216	249	133	2,080
	% in 2yrs.	42.0	56.8	51.4	45.8	47.9	44.7	40.2	Inc	47.2
	Failed	94	100	75	84	75	70	56	Inc	554
YDC Commitments (C)	% in 3yrs.	50.7	62.5	57.0	51.9	52.5	48.0	Inc	Inc	54.1
	Failed	70	47	45	45	33	21	Inc	Inc	261
	Releases	190	181	181	194	141	131	109	79	1,206
	% in 1yr.	23.7	25.4	21.5	21.1	39.0	37.4	33.0	26.6	27.5
	Failed	45	46	39	41	55	49	36	21	332
	% in 2yrs.	48.4	42.0	42.0	33.5	52.5	52.7	43.1	Inc	44.3
Non-Secure Residential Commitments (D)	Failed	47	31	37	25	20	20	11	Inc	191
	% in 3yrs.	56.3	50.3	49.2	38.7	61.7	54.2	Inc	Inc	51.1
	Failed	15	16	13	10	13	2	Inc	Inc	69
	Releases	101	92	130	142	123	199	186	145	1,118
	% in 1yr.	32.7	21.7	25.4	33.8	26.8	27.6	24.7	13.8	25.8
	Failed	33	20	33	48	33	55	46	20	288
Home Commitments (E)	% in 2yrs.	44.6	33.7	40.0	43.0	39.0	40.2	32.8	Inc	38.8
	Failed	12	11	20	13	15	25	15	Inc	111
	% in 3yrs.	53.5	40.2	47.7	47.2	45.5	44.2	Inc	Inc	46.3
	Failed	9	6	11	6	8	8	Inc	Inc	48
	Releases	22	36	40	54	51	91	35	149	478
	% in 1yr.	22.7	36.1	15.0	40.7	25.5	22.0	34.3	22.8	26.2
Combined Commitment Programs (C-E)	Failed	5	13	6	22	13	20	12	34	125
	% in 2yrs.	40.9	44.4	25.0	53.7	35.3	33.0	42.9	Inc	38.6
	Failed	4	3	4	7	5	10	3	Inc	36
	% in 3yrs.	54.5	47.2	32.5	55.6	45.1	38.5	Inc	Inc	44.2
	Failed	3	1	3	1	5	5	Inc	Inc	18
	Releases	313	309	351	390	315	421	330	373	2,802
All Programs Combined (A-E)	% in 1yr.	26.5	25.6	22.2	28.5	32.1	29.5	28.5	20.1	26.6
	Failed	83	79	78	111	101	124	94	75	745
	% in 2yrs.	46.6	39.8	39.3	39.7	44.4	42.5	37.3	Inc	41.3
	Failed	63	45	61	45	40	55	29	Inc	338
	% in 3yrs.	55.3	46.9	46.7	44.1	52.7	46.1	Inc	Inc	48.3
	Failed	27	23	27	17	26	15	Inc	Inc	135
All Programs Combined (A-E)	Releases	3,328	3,446	3,253	3,197	3,230	3,048	3,089	2,796	25,387
	% in 1yr.	13.9	19.6	21.3	24.4	19.5	27.6	24.4	18.1	21.0
	Failed	462	674	692	780	629	842	753	506	5,338
	% in 2yrs.	27.6	31.8	33.7	36.9	28.4	36.4	31.8	Inc	32.3
	Failed	457	424	404	400	289	269	230	Inc	2,473
	% in 3yrs.	37.5	38.5	40.2	42.9	32.0	39.7	Inc	Inc	38.5
	Failed	329	232	215	192	115	101	Inc	Inc	1,184

Inc=Follow-up period incomplete.



**Table 4**  
**Region 3: Recidivism Rates for FY98 - FY05 Programs**

Type of Program	Follow-Up Period	Number of Releases, Failures and Cumulative % Recidivism by Cohort								
		FY98	FY99	FY00	FY01	FY02	FY03	FY04	FY05	Totals (FY98-05)
	Releases	1,124	1,309	1,398	1,204	1,192	1,033	1,039	1,424	9,723
Probation (A)	% in 1yr.	7.3	8.5	11.7	19.4	9.6	21.9	21.5	23.6	15.3
	Failed	82	111	163	233	114	226	223	336	1,488
	% in 2yrs.	17.4	20.7	21.8	30.4	15.7	30.3	28.9	Inc	23.4
	Failed	114	160	142	133	73	87	77	Inc	786
	% in 3yrs.	27.8	28.2	27.1	35.5	18.6	33.1	Inc	Inc	28.3
	Failed	117	98	74	61	35	29	Inc	Inc	414
STP (B)	Releases	1,455	1,344	1,275	1,124	1,151	1,027	908	680	8,964
	% in 1yr.	32.6	39.7	39.3	30.0	36.1	26.8	26.9	17.8	32.4
	Failed	474	534	501	337	416	275	244	121	2,902
	% in 2yrs.	44.6	51.3	48.8	38.5	45.1	35.9	34.5	Inc	43.4
	Failed	175	156	121	96	103	94	69	Inc	814
	% in 3yrs.	50.9	56.9	53.6	45.0	50.0	38.7	Inc	Inc	49.7
	Failed	91	75	62	73	57	28	Inc	Inc	386
YDC Commitments (C)	Releases	334	356	331	315	262	269	213	206	2,286
	% in 1yr.	35.6	22.5	21.1	21.6	26.3	31.6	30.5	17.5	25.9
	Failed	119	80	71	68	69	85	65	36	593
	% in 2yrs.	48.8	37.4	41.7	34.3	35.9	44.2	41.3	Inc	40.5
	Failed	44	56	68	42	25	34	23	Inc	235
	% in 3yrs.	59.3	46.9	50.2	41.6	43.9	52.4	Inc	Inc	49.5
	Failed	35	34	28	25	21	22	Inc	Inc	16
Non-Secure Residential Commitments (D)	Releases	276	288	215	247	197	430	577	440	2,670
	% in 1yr.	29.0	26.4	20.0	25.1	32.5	26.7	25.3	18.9	25.1
	Failed	80	76	43	62	64	115	146	83	669
	% in 2yrs.	41.7	35.1	34.4	35.2	40.6	37.4	34.0	Inc	36.5
	Failed	35	26	33	26	16	46	51	Inc	233
	% in 3yrs.	47.5	52.0	44.2	41.7	49.2	43.5	Inc	Inc	44.4
	Failed	16	20	21	16	17	26	Inc	Inc	116
Home Commitments (E)	Releases	303	220	291	280	349	368	206	441	2,458
	% in 1yr.	38.3	31.4	22.7	35.0	38.7	26.1	33.5	24.0	30.7
	Failed	116	69	66	98	135	96	69	106	755
	% in 2yrs.	48.5	42.3	39.5	41.4	46.7	34.8	38.8	Inc	41.7
	Failed	31	24	49	18	28	32	11	Inc	193
	% in 3yrs.	58.1	46.4	46.0	45.7	53.9	37.8	Inc	Inc	47.9
	Failed	29	9	19	12	25	11	Inc	Inc	105
Combined Commitment Programs (C-E)	Releases	913	864	837	842	808	1,067	996	1,087	7,414
	% in 1yr.	34.5	26.0	21.4	27.1	33.2	27.7	28.1	20.7	27.2
	Failed	315	225	180	228	268	296	280	225	2,017
	% in 2yrs.	46.5	37.8	39.1	36.9	41.7	38.2	36.5	Inc	39.5
	Failed	110	106	150	86	69	112	85	Inc	718
	% in 3yrs.	55.3	45.1	47.2	43.0	49.5	43.8	Inc	Inc	47.3
	Failed	80	63	68	53	63	59	Inc	Inc	386
All Programs Combined (A-E)	Releases	3,492	3,517	3,510	3,170	3,151	3,127	2,943	3,191	26,101
	% in 1yr.	24.9	24.7	24.0	25.2	25.3	25.5	25.4	21.4	24.5
	Failed	871	870	844	798	798	797	747	682	6,407
	% in 2yrs.	36.4	36.6	35.7	35.0	33.1	34.9	33.2	Inc	35.1
	Failed	399	422	413	315	245	293	231	Inc	2,318
	% in 3yrs.	44.6	43.3	41.5	40.9	38.0	38.6	Inc	Inc	41.3
	Failed	288	236	204	187	155	116	Inc	Inc	1,186

Inc=Follow-up period incomplete.

**Table 5**  
**Region 4: Recidivism Rates for FY98 - FY05 Programs**

Type of Program	Follow-Up Period	Number of Releases, Failures and Cumulative % Recidivism by Cohort								
		FY98	FY99	FY00	FY01	FY02	FY03	FY04	FY05	Totals (FY98-05)
Probation (A)	Releases	2,699	2,729	2,251	1,997	1,803	1,748	1,457	1,573	16,257
	% in 1yr.	7.7	10.4	12.0	23.8	13.3	25.7	24.2	20.6	16.0
	Failed	208	285	270	475	239	449	352	324	2,602
	% in 2yrs.	20.7	23.3	26.1	36.5	22.0	35.5	33.0	Inc	27.3
	Failed	351	351	317	254	157	172	129	Inc	1,731
	% in 3yrs.	30.6	31.2	33.4	42.0	25.7	38.8	Inc	Inc	33.3
STP (B)	Failed	267	216	166	109	67	57	Inc	Inc	882
	Releases	1,114	1,079	1,014	1,023	952	795	849	701	7,527
	% in 1yr.	40.4	51.5	49.7	40.0	46.7	42.8	38.0	28.5	42.9
	Failed	450	556	504	409	445	340	323	200	3,227
	% in 2yrs.	54.8	63.5	60.0	50.9	57.9	53.6	45.8	Inc	55.5
	Failed	161	129	104	112	106	86	67	Inc	765
YDC Commitments (C)	% in 3yrs.	62.0	67.7	65.7	56.2	63.0	57.2	Inc	Inc	62.2
	Failed	80	45	58	54	49	29	Inc	Inc	315
	Releases	236	307	305	257	259	167	149	173	1,853
	% in 1yr.	36.4	37.1	25.9	24.5	35.5	34.1	32.2	27.7	31.7
	Failed	86	114	79	63	92	57	48	48	587
	% in 2yrs.	52.1	58.0	45.2	38.5	52.1	55.1	40.3	Inc	49.1
Non-Secure Residential Commitments (D)	Failed	37	65	59	37	43	35	12	Inc	288
	% in 3yrs.	65.7	64.2	57.4	45.1	60.6	59.3	Inc	Inc	58.7
	Failed	32	21	37	17	22	7	Inc	Inc	136
	Releases	100	90	74	106	114	158	134	120	896
	% in 1yr.	37.0	47.8	29.7	31.1	28.9	27.8	29.1	23.3	31.1
	Failed	37	43	22	33	33	44	39	28	279
Home Commitments (E)	% in 2yrs.	56.0	58.9	51.4	41.5	43.0	40.5	44.0	Inc	46.8
	Failed	19	10	16	11	16	20	20	Inc	112
	% in 3yrs.	64.0	60.0	58.1	48.1	54.4	46.2	Inc	Inc	54.0
	Failed	8	1	5	7	13	9	Inc	Inc	43
	Releases	71	51	134	111	86	89	39	124	705
	% in 1yr.	45.1	47.1	32.8	29.7	39.5	25.8	30.8	30.6	34.0
Combined Commitment Programs (C-E)	Failed	32	24	44	33	34	23	12	38	240
	% in 2yrs.	57.7	51.0	50.7	39.6	47.7	38.2	36	Inc	46.1
	Failed	9	2	24	11	7	11	2	Inc	66
	% in 3yrs.	60.6	52.9	56.7	45.9	55.8	43	Inc	Inc	52.2
	Failed	2	1	8	7	7	4	Inc	Inc	29
	Releases	407	448	513	474	459	414	322	417	3,454
All Programs Combined (A-E)	% in 1yr.	38.1	40.4	28.3	27.2	34.6	30.0	30.7	27.3	32.0
	Failed	155	181	145	129	159	124	99	114	1,106
	% in 2yrs.	54.1	57.4	47.6	39.5	49.0	45.9	41.3	Inc	47.9
	Failed	65	77	99	59	66	66	34	Inc	466
	% in 3yrs.	64.4	62.1	57.3	46.0	58.2	50.7	Inc	Inc	56.3
	Failed	42	23	50	31	42	20	Inc	Inc	208
All Programs Combined (A-E)	Releases	4,220	4,256	3,778	3,494	3,214	2,957	2,628	2,691	27,238
	% in 1yr.	19.3	24.0	24.3	29.0	26.2	30.9	29.5	23.7	25.5
	Failed	813	1,022	919	1,013	843	913	774	638	6,935
	% in 2yrs.	32.9	37.1	38.1	41.1	36.5	41.8	38.2	Inc	37.7
	Failed	577	557	520	425	329	324	230	Inc	2,962
	% in 3yrs.	42.2	43.7	45.3	46.7	41.4	45.4	Inc	Inc	44.0
	Failed	389	284	274	194	158	106	Inc	Inc	1,405

Inc=Follow-up period incomplete.

**Table 6**  
**Region 5: Recidivism Rates for FY98 - FY05 Programs**

Type of Program	Follow-Up Period	Number of Releases, Failures and Cumulative % Recidivism by Cohort								
		FY98	FY99	FY00	FY01	FY02	FY03	FY04	FY05	Totals (FY98-05)
	Releases	2,005	1,960	1,986	1,817	1,597	1,512	1,477	1,655	14,009
Probation (A)	% in 1yr.	6.1	9.2	12.1	21.4	10.6	23.1	18.8	15.5	14.2
	Failed	122	181	241	389	169	349	277	256	1,984
	% in 2yrs.	18.3	21.5	22.7	32.0	18.4	31.2	26.6	Inc	24.1
	Failed	245	241	209	193	125	122	116	Inc	1,251
	% in 3yrs.	27.9	27.8	28.1	36.9	21.2	35.3	Inc	Inc	29.5
	Failed	192	123	109	89	45	62	Inc	Inc	620
STP (B)	Releases	1,142	1,011	949	939	847	816	822	592	7,118
	% in 1yr.	36.1	46.9	44.3	40.6	43.6	35.5	43.7	21.3	39.8
	Failed	412	474	420	381	369	290	359	126	2,831
	% in 2yrs.	49.0	55.1	51.3	49.7	52.7	47.2	51.7	Inc	51.0
	Failed	148	83	67	86	77	95	66	Inc	622
	% in 3yrs.	55.7	60.1	56.7	54.6	56.3	50.4	Inc	Inc	55.8
	Failed	76	51	51	46	31	26	Inc	Inc	281
YDC Commitments (C)	Releases	320	330	336	276	207	209	200	220	2,098
	% in 1yr.	28.4	27.3	24.7	25.7	35.7	33.5	30.0	20.9	27.9
	Failed	91	90	83	71	74	70	60	46	585
	% in 2yrs.	46.6	43.6	44.3	39.5	49.8	45.5	35.5	Inc	43.7
	Failed	58	58	66	38	29	25	11	Inc	285
	% in 3yrs.	56.3	49.4	55.4	45.3	55.6	50.7	Inc	Inc	52.1
	Failed	31	19	37	17	12	11	Inc	Inc	127
Non-Secure Residential Commitments (D)	Releases	180	133	151	188	163	235	317	249	1,616
	% in 1yr.	33.3	30.1	22.5	27.7	28.8	30.6	30.9	21.7	28.3
	Failed	60	40	34	53	47	72	98	54	458
	% in 2yrs.	46.7	42.1	43.0	44.1	42.9	43.4	40.1	Inc	42.9
	Failed	24	16	31	32	23	30	29	Inc	185
	% in 3yrs.	56.7	51.1	53.6	50.0	48.5	48.9	Inc	Inc	51.3
	Failed	18	12	18	11	9	13	Inc	Inc	81
Home Commitments (E)	Releases	47	31	134	114	143	103	71	194	837
	% in 1yr.	44.7	29.0	23.1	35.1	42.7	30.1	50.7	23.2	32.7
	Failed	21	9	31	40	61	31	36	45	274
	% in 2yrs.	57.4	35.5	35.8	49.1	52.4	40.8	56.3	Inc	46.5
	Failed	6	2	17	16	14	11	4	Inc	70
	% in 3yrs.	57.4	41.9	47.8	57.0	58.0	44.7	Inc	Inc	52.1
	Failed	2	16	9	8	4	4	Inc	Inc	39
Combined Commitment Programs (C-E)	Releases	547	494	621	578	513	547	588	663	4,551
	% in 1yr.	31.4	28.1	23.8	28.2	35.5	31.6	33.0	21.9	28.9
	Failed	172	139	148	164	182	173	194	145	1,317
	% in 2yrs.	47.5	42.7	42.2	42.9	48.3	43.7	40.5	Inc	43.9
	Failed	88	76	114	86	66	66	44	Inc	540
	% in 3yrs.	56.5	49.4	53.3	49.1	54.0	48.8	Inc	Inc	51.9
	Failed	49	33	71	37	29	28	Inc	Inc	247
All Programs Combined (A-E)	Releases	3,694	3,465	3,556	3,334	2,957	2,875	2,887	2,910	25,678
	% in 1yr.	19.1	22.9	22.8	28.0	24.3	28.2	28.7	18.1	23.9
	Failed	706	794	809	934	720	812	830	527	6,132
	% in 2yrs.	32.1	34.3	33.7	38.9	33.4	38.1	36.6	Inc	35.2
	Failed	481	400	390	365	268	283	226	Inc	2,413
	% in 3yrs.	40.7	40.3	40.2	44.0	37.0	42.1	Inc	Inc	40.7
	Failed	317	207	231	172	105	116	Inc	Inc	1,148

Inc=Follow-up period incomplete.



## **APPENDIX B**

### **Tables 7 – 13**

#### **FY98 – FY05 Regional Recidivism Rates by DJJ Program**

**Table 7**  
**Total Program Recidivism Rates for FY98 - FY05 Cohorts by Region**

Region	Follow-Up Period	Number of Releases, Failures and Cumulative % Recidivism by Cohort								
		FY98	FY99	FY00	FY01	FY02	FY03	FY04	FY05	Totals (FY98-05)
Region 1	Releases	2,679	2,477	2,700	2,270	2,244	2,295	2,488	2,451	19,604
	% in 1yr.	16.9	21.5	22.4	25.5	20.9	23.4	21.1	18.8	21.2
	Failed	454	533	604	579	468	537	524	461	4,160
	% in 2yrs.	29.6	32.6	33.0	35.5	29.0	31.5	28.7	Inc	31.4
	Failed	344	275	288	228	184	186	190	Inc	1,695
	% in 3yrs.	38.3	39.4	39.4	41.3	32.4	34.9	Inc	Inc	37.7
Region 2	Failed	233	169	174	132	78	79	Inc	Inc	865
	Releases	3,328	3,446	3,253	3,197	3,230	3,048	3,089	2,796	25,387
	% in 1yr.	13.9	19.6	21.3	24.4	19.5	27.6	24.4	18.1	21.0
	Failed	462	674	692	780	629	842	753	506	5,338
	% in 2yrs.	27.6	31.8	33.7	36.9	28.4	36.4	31.8	Inc	32.3
	Failed	457	424	404	400	289	269	230	Inc	2,473
Region 3	% in 3yrs.	37.5	38.5	40.2	42.9	32.0	39.7	Inc	Inc	38.5
	Failed	329	232	215	192	115	101	Inc	Inc	1,184
	Releases	3,492	3,517	3,510	3,170	3,151	3,127	2,943	3,191	26,101
	% in 1yr.	24.9	24.7	24.0	25.2	25.3	25.5	25.4	21.4	24.5
	Failed	871	870	844	798	798	797	747	682	6,407
	% in 2yrs.	36.4	36.6	35.7	35.0	33.1	34.9	33.2	Inc	35.1
Region 4	Failed	399	422	413	315	245	293	231	Inc	2,318
	% in 3yrs.	44.6	43.3	41.5	40.9	38.0	38.6	Inc	Inc	41.3
	Failed	288	236	204	187	155	116	Inc	Inc	1,186
	Releases	4,220	4,256	3,778	3,494	3,214	2,957	2,628	2,691	27,238
	% in 1yr.	19.3	24.0	24.3	29.0	26.2	30.9	29.5	23.7	25.5
	Failed	813	1,022	919	1,013	843	913	774	638	6,935
Region 5	% in 2yrs.	32.9	37.1	38.1	41.1	36.5	41.8	38.2	Inc	37.7
	Failed	577	557	520	425	329	324	230	Inc	2,962
	% in 3yrs.	42.2	43.7	45.3	46.7	41.4	45.4	Inc	Inc	44.0
	Failed	389	284	274	194	158	106	Inc	Inc	1,405
	Releases	3,694	3,465	3,556	3,334	2,957	2,875	2,887	2,910	25,678
	% in 1yr.	19.1	22.9	22.8	28.0	24.3	28.2	28.7	18.1	23.9
All Regions Combined	Failed	706	794	809	934	720	812	830	527	6,132
	% in 2yrs.	32.1	34.3	33.7	38.9	33.4	38.1	36.6	Inc	35.2
	Failed	481	400	390	365	268	283	226	Inc	2,413
	% in 3yrs.	40.7	40.3	40.2	44.0	37.0	42.1	Inc	Inc	40.7
	Failed	317	207	231	172	105	116	Inc	Inc	1,148
	Releases	17,413	17,161	16,797	15,465	14,796	14,302	14,035	14,039	124,008
All Regions Combined	% in 1yr.	19.0	22.7	23.0	26.5	23.4	27.3	25.9	20.0	23.4
	Failed	3,306	3,893	3,868	4,104	3,458	3,901	3,628	2,814	28,972
	% in 2yrs.	31.9	34.7	35.0	37.7	32.2	36.7	33.7	Inc	34.5
	Failed	2,258	2,078	2,015	1,733	1,315	1,355	1,107	Inc	11,861
	% in 3yrs.	40.9	41.3	41.5	43.3	36.4	40.4	Inc	Inc	40.7
	Failed	1,556	1,128	1,098	877	611	518	Inc	Inc	5,788

Inc=Follow-up period incomplete.

**Table 8**  
**PROBATION: Recidivism Rates for FY98 - FY05 by Region**

Region	Follow-Up Period	Number of Releases, Failures and Cumulative % Recidivism by Cohort								
		FY98	FY99	FY00	FY01	FY02	FY03	FY04	FY05	Totals (FY98-05)
Region 1	Releases	1,535	1,469	1,566	1,281	1,323	1,254	1,417	1,563	11,408
	% in 1yr.	7.4	9.3	12.4	22.2	11.3	18.2	15.3	17.0	13.9
	Failed	113	136	194	285	150	228	217	265	1,588
	% in 2yrs.	18.4	20.0	22.2	30.7	17.2	24.9	22.7	Inc	22.1
	Failed	170	158	153	108	78	84	104	Inc	855
	% in 3yrs.	28.0	27.4	28.2	36.2	19.5	28.1	Inc	Inc	27.9
Region 2	Failed	147	108	95	71	30	40	Inc	Inc	491
	Releases	2,204	2,303	2,098	2,077	2,189	1,987	2,000	1,793	16,651
	% in 1yr.	6.0	9.6	13.2	20.2	11.6	25.3	20.5	16.6	15.1
	Failed	132	221	276	419	255	502	410	298	2,513
	% in 2yrs.	19.6	21.7	25.9	33.2	19.6	32.5	27.8	Inc	25.5
	Failed	300	279	268	271	174	144	145	Inc	1,581
Region 3	% in 3yrs.	30.1	28.7	32.7	39.5	22.2	35.7	Inc	Inc	31.3
	Failed	232	162	143	130	56	65	Inc	Inc	788
	Releases	1,124	1,309	1,398	1,204	1,192	1,033	1,039	1,424	9,723
	% in 1yr.	7.3	8.5	11.7	19.4	9.6	21.9	21.5	23.6	15.3
	Failed	82	111	163	233	114	226	223	336	1,488
	% in 2yrs.	17.4	20.7	21.8	30.4	15.7	30.3	28.9	Inc	23.4
Region 4	Failed	114	160	142	133	73	87	77	Inc	786
	% in 3yrs.	27.8	28.2	27.1	35.5	18.6	33.1	Inc	Inc	28.3
	Failed	117	98	74	61	35	29	Inc	Inc	414
	Releases	2,699	2,729	2,251	1,997	1,803	1,748	1,457	1,573	16,257
	% in 1yr.	7.7	10.4	12.0	23.8	13.3	25.7	24.2	20.6	16.0
	Failed	208	285	270	475	239	449	352	324	2,602
Region 5	% in 2yrs.	20.7	23.3	26.1	36.5	22.0	35.5	33.0	Inc	27.3
	Failed	351	351	317	254	157	172	129	Inc	1,731
	% in 3yrs.	30.6	31.2	33.4	42.0	25.7	38.8	Inc	Inc	33.3
	Failed	267	216	166	109	67	57	Inc	Inc	882
	Releases	2,005	1,960	1,986	1,817	1,597	1,512	1,477	1,655	14,009
	% in 1yr.	6.1	9.2	12.1	21.4	10.6	23.1	18.8	15.5	14.2
All Regions Combined	Failed	122	181	241	389	169	349	277	256	1,984
	% in 2yrs.	18.3	21.5	22.7	32.0	18.4	31.2	26.6	Inc	24.1
	Failed	245	241	209	193	125	122	116	Inc	1,251
	% in 3yrs.	27.9	27.8	28.1	36.9	21.2	35.3	Inc	Inc	29.5
	Failed	192	123	109	89	45	62	Inc	Inc	620
	Releases	9,567	9,770	9,299	8,376	8,104	7,534	7,390	8,008	68,048
All Regions Combined	% in 1yr.	6.9	9.6	12.3	21.5	11.4	23.3	20.0	18.5	15.0
	Failed	657	934	1,144	1,801	927	1,754	1,479	1,479	10,175
	% in 2yrs.	19.2	21.7	24.0	33.0	18.9	31.4	27.7	Inc	24.8
	Failed	1,180	1,189	1,089	959	607	609	571	Inc	6,204
	% in 3yrs.	29.2	29.0	30.3	38.4	21.8	34.7	Inc	Inc	30.5
	Failed	955	707	587	460	233	253	Inc	Inc	3,195

Inc=Follow-up period incomplete.

**Table 9**  
**STP: Recidivism Rates for FY98 - FY05 by Region**

Region	Follow-Up Period	Number of Releases, Failures and Cumulative % Recidivism by Cohort								
		FY98	FY99	FY00	FY01	FY02	FY03	FY04	FY05	Totals (FY98-05)
Region 1	Releases	810	676	696	593	563	618	703	479	5,138
	% in 1yr.	29.3	42.5	44.5	32.4	36.2	28.0	29.6	21.9	33.4
	Failed	237	287	310	192	204	173	208	105	1,716
	% in 2yrs.	44.3	54.0	53.9	45.9	46.5	36.6	38.3	Inc	45.7
	Failed	122	78	65	80	58	53	61	Inc	517
	% in 3yrs.	51.6	59.2	59.8	51.6	51.9	40.1	Inc	Inc	52.6
Region 2	Failed	59	35	41	34	30	22	Inc	Inc	221
	Releases	811	834	804	730	726	640	759	630	5,934
	% in 1yr.	30.5	44.8	42.0	34.2	37.6	33.8	32.8	21.1	35.1
	Failed	247	374	338	250	273	216	249	133	2,080
	% in 2yrs.	42.0	56.8	51.4	45.8	47.9	44.7	40.2	Inc	47.2
	Failed	94	100	75	84	75	70	56	Inc	554
Region 3	% in 3yrs.	50.7	62.5	57.0	51.9	52.5	48.0	Inc	Inc	54.1
	Failed	70	47	45	45	33	21	Inc	Inc	261
	Releases	1,455	1,344	1,275	1,124	1,151	1,027	908	680	8,964
	% in 1yr.	32.6	39.7	39.3	30.0	36.1	26.8	26.9	17.8	32.4
	Failed	474	534	501	337	416	275	244	121	2,902
	% in 2yrs.	44.6	51.3	48.8	38.5	45.1	35.9	34.5	Inc	43.4
Region 4	Failed	175	156	121	96	103	94	69	Inc	814
	% in 3yrs.	50.9	56.9	53.6	45.0	50.0	38.7	Inc	Inc	49.7
	Failed	91	75	62	73	57	28	Inc	Inc	386
	Releases	1,114	1,079	1,014	1,023	952	795	849	701	7,527
	% in 1yr.	40.4	51.5	49.7	40.0	46.7	42.8	38.0	28.5	42.9
	Failed	450	556	504	409	445	340	323	200	3,227
Region 5	% in 2yrs.	54.8	63.5	60.0	50.9	57.9	53.6	45.8	Inc	55.5
	Failed	161	129	104	112	106	86	67	Inc	765
	% in 3yrs.	62.0	67.7	65.7	56.2	63.0	57.2	Inc	Inc	62.2
	Failed	80	45	58	54	49	29	Inc	Inc	315
	Releases	1,142	1,011	949	939	847	816	822	592	7,118
	% in 1yr.	36.1	46.9	44.3	40.6	43.6	35.5	43.7	21.3	39.8
All Regions Combined	Failed	412	474	420	381	369	290	359	126	2,831
	% in 2yrs.	49.0	55.1	51.3	49.7	52.7	47.2	51.7	Inc	51.0
	Failed	148	83	67	86	77	95	66	Inc	622
	% in 3yrs.	55.7	60.1	56.7	54.6	56.3	50.4	Inc	Inc	55.8
	Failed	76	51	51	46	31	26	Inc	Inc	281
	Releases	5,332	4,944	4,738	4,409	4,239	3,896	4,041	3,082	34,681
All Regions Combined	% in 1yr.	34.1	45.0	43.8	35.6	40.3	33.2	34.2	22.2	36.8
	Failed	1,820	2,225	2,073	1,569	1,707	1,294	1,383	685	12,756
	% in 2yrs.	47.3	56.0	52.9	46.0	50.2	43.4	42.1	Inc	48.6
	Failed	700	546	432	458	419	398	319	Inc	3,272
	% in 3yrs.	54.3	61.2	58.3	51.7	54.9	46.7	Inc	Inc	54.8
	Failed	376	253	257	252	200	126	Inc	Inc	1,464

Inc=Follow-up period incomplete.



**Table 10**  
**YDC COMMITMENTS: Recidivism Rates for FY98 - FY05 by Region**

Region	Follow-Up Period	Number of Releases, Failures and Cumulative % Recidivism by Cohort								
		FY98	FY99	FY00	FY01	FY02	FY03	FY04	FY05	Totals (FY98-05)
Region 1	Releases	155	176	199	159	142	83	72	59	1,045
	% in 1yr.	33.5	30.7	23.1	20.1	40.1	39.8	20.8	18.6	28.7
	Failed	54	54	46	32	57	33	15	11	302
	% in 2yrs.	51.6	43.8	42.7	34.0	54.2	50.6	25.0	Inc	43.9
	Failed	30	23	39	22	21	9	3	Inc	147
	% in 3yrs.	58.1	51.7	52.8	41.5	59.2	54.2	Inc	Inc	52.6
Region 2	Failed	11	14	20	13	7	3	Inc	Inc	68
	Releases	190	181	181	194	141	131	109	79	1,206
	% in 1yr.	23.7	25.4	21.5	21.1	39.0	37.4	33.0	26.6	27.5
	Failed	45	46	39	41	55	49	36	21	332
	% in 2yrs.	48.4	42.0	42.0	33.5	52.5	52.7	43.1	Inc	44.3
	Failed	47	31	37	25	20	20	11	Inc	191
Region 3	% in 3yrs.	56.3	50.3	49.2	38.7	61.7	54.2	Inc	Inc	51.1
	Failed	15	16	13	10	13	2	Inc	Inc	69
	Releases	334	356	331	315	262	269	213	206	2,286
	% in 1yr.	35.6	22.5	21.1	21.6	26.3	31.6	30.5	17.5	25.9
	Failed	119	80	71	68	69	85	65	36	593
	% in 2yrs.	48.8	37.4	41.7	34.3	35.9	44.2	41.3	Inc	40.5
Region 4	Failed	44	56	68	42	25	34	23	Inc	235
	% in 3yrs.	59.3	46.9	50.2	41.6	43.9	52.4	Inc	Inc	49.5
	Failed	35	34	28	25	21	22	Inc	Inc	16
	Releases	236	307	305	257	259	167	149	173	1,853
	% in 1yr.	36.4	37.1	25.9	24.5	35.5	34.1	32.2	27.7	31.7
	Failed	86	114	79	63	92	57	48	48	587
Region 5	% in 2yrs.	52.1	58.0	45.2	38.5	52.1	55.1	40.3	Inc	49.1
	Failed	37	65	59	37	43	35	12	Inc	288
	% in 3yrs.	65.7	64.2	57.4	45.1	60.6	59.3	Inc	Inc	58.7
	Failed	32	21	37	17	22	7	Inc	Inc	136
	Releases	320	330	336	276	207	209	200	220	2,098
	% in 1yr.	28.4	27.3	24.7	25.7	35.7	33.5	30.0	20.9	27.9
All Regions Combined	Failed	91	90	83	71	74	70	60	46	585
	% in 2yrs.	46.6	43.6	44.3	39.5	49.8	45.5	35.5	Inc	43.7
	Failed	58	58	66	38	29	25	11	Inc	285
	% in 3yrs.	56.3	49.4	55.4	45.3	55.6	50.7	Inc	Inc	52.1
	Failed	31	19	37	17	12	11	Inc	Inc	127
	Releases	1,235	1,350	1,352	1,201	1,011	859	743	737	8,488
All Regions Combined	% in 1yr.	31.8	28.4	23.4	22.9	34.3	34.2	30.1	22.0	28.2
	Failed	395	384	318	275	347	294	224	162	2,399
	% in 2yrs.	49.2	45.0	43.3	36.2	47.8	48.5	38.2	Inc	44.1
	Failed	216	233	269	164	138	123	60	Inc	1,203
	% in 3yrs.	59.1	52.5	53.4	42.7	55.2	53.8	Inc	Inc	52.7
	Failed	124	104	135	82	75	45	Inc	Inc	565

Inc=Follow-up period incomplete.

Table 11

**NON-SECURE RESIDENTIAL COMMITMENTS: Recidivism Rates for FY98 - FY05 by Region**

Region	Follow-Up Period	Number of Releases, Failures and Cumulative % Recidivism by Cohort								
		FY98	FY99	FY00	FY01	FY02	FY03	FY04	FY05	Totals (FY98-05)
Region 1	Releases	109	104	167	122	106	200	228	183	1,219
	% in 1yr.	28.4	35.6	22.8	27.0	25.5	32.0	25.9	19.1	26.6
	Failed	31	37	38	34	27	64	59	35	325
	% in 2yrs.	41.3	45.2	35.9	33.6	39.6	41.5	32.9	Inc	37.9
	Failed	14	10	23	8	15	19	16	Inc	105
	% in 3yrs.	48.6	53.8	42.5	37.7	44.3	46.0	Inc	Inc	45.2
Region 2	Failed	8	9	12	5	5	9	Inc	Inc	48
	Releases	101	92	130	142	123	199	186	145	1,118
	% in 1yr.	32.7	21.7	25.4	33.8	26.8	27.6	24.7	13.8	25.8
	Failed	33	20	33	48	33	55	46	20	288
	% in 2yrs.	44.6	33.7	40.0	43.0	39.0	40.2	32.8	Inc	38.8
	Failed	12	11	20	13	15	25	15	Inc	111
Region 3	% in 3yrs.	53.5	40.2	47.7	47.2	45.5	44.2	Inc	Inc	46.3
	Failed	9	6	11	6	8	8	Inc	Inc	48
	Releases	276	288	215	247	197	430	577	440	2,670
	% in 1yr.	29.0	26.4	20.0	25.1	32.5	26.7	25.3	18.9	25.1
	Failed	80	76	43	62	64	115	146	83	669
	% in 2yrs.	41.7	35.1	34.4	35.2	40.6	37.4	34.0	Inc	36.5
Region 4	Failed	35	26	33	26	16	46	51	Inc	233
	% in 3yrs.	47.5	52.0	44.2	41.7	49.2	43.5	Inc	Inc	44.4
	Failed	16	20	21	16	17	26	Inc	Inc	116
	Releases	100	90	74	106	114	158	134	120	896
	% in 1yr.	37.0	47.8	29.7	31.1	28.9	27.8	29.1	23.3	31.1
	Failed	37	43	22	33	33	44	39	28	279
Region 5	% in 2yrs.	56.0	58.9	51.4	41.5	43.0	40.5	44.0	Inc	46.8
	Failed	19	10	16	11	16	20	20	Inc	112
	% in 3yrs.	64.0	60.0	58.1	48.1	54.4	46.2	Inc	Inc	54.0
	Failed	8	1	5	7	13	9	Inc	Inc	43
	Releases	180	133	151	188	163	235	317	249	1,616
	% in 1yr.	33.3	30.1	22.5	27.7	28.8	30.6	30.9	21.7	28.3
All Regions Combined	Failed	60	40	34	53	47	72	98	54	458
	% in 2yrs.	46.7	42.1	43.0	44.1	42.9	43.4	40.1	Inc	42.9
	Failed	24	16	31	32	23	30	29	Inc	185
	% in 3yrs.	56.7	51.1	53.6	50.0	48.5	48.9	Inc	Inc	51.3
	Failed	18	12	18	11	9	13	Inc	Inc	81
	Releases	766	707	737	805	703	1,222	1,442	1,137	7,519
All Regions Combined	% in 1yr.	31.5	30.6	23.1	28.3	29.0	28.6	26.9	19.3	26.8
	Failed	241	216	170	230	204	350	388	220	2,019
	% in 2yrs.	45.0	40.7	39.2	39.3	41.1	40.1	35.9	Inc	39.7
	Failed	104	73	123	90	85	140	131	Inc	746
	% in 3yrs.	52.7	47.5	47.8	44.8	48.5	45.4	Inc	Inc	47.6
	Failed	59	48	67	45	52	65	Inc	Inc	336

Inc=Follow-up period incomplete.

**Table 12**  
**HOME COMMITMENTS: Recidivism Rates for FY98 - FY05 by Region**

Region	Follow-Up Period	Number of Releases, Failures and Cumulative % Recidivism by Cohort								
		FY98	FY99	FY00	FY01	FY02	FY03	FY04	FY05	Totals (FY98-05)
Region 1	Releases	70	52	72	115	110	140	68	167	794
	% in 1yr.	27.1	36.5	22.2	31.3	27.3	27.9	36.8	26.9	28.8
	Failed	19	19	16	36	30	39	25	45	229
	% in 2yrs.	38.6	48.1	33.3	40.0	38.2	42.9	45.6	Inc	40.7
	Failed	8	6	8	10	12	21	6	Inc	71
	% in 3yrs.	50.0	53.8	41.7	47.8	42.7	46.4	Inc	Inc	46.5
Region 2	Failed	8	3	6	9	6	5	Inc	Inc	37
	Releases	22	36	40	54	51	91	35	149	478
	% in 1yr.	22.7	36.1	15.0	40.7	25.5	22.0	34.3	22.8	26.2
	Failed	5	13	6	22	13	20	12	34	125
	% in 2yrs.	40.9	44.4	25.0	53.7	35.3	33.0	42.9	Inc	38.6
	Failed	4	3	4	7	5	10	3	Inc	36
Region 3	% in 3yrs.	54.5	47.2	32.5	55.6	45.1	38.5	Inc	Inc	44.2
	Failed	3	1	3	1	5	5	Inc	Inc	18
	Releases	303	220	291	280	349	368	206	441	2,458
	% in 1yr.	38.3	31.4	22.7	35.0	38.7	26.1	33.5	24.0	30.7
	Failed	116	69	66	98	135	96	69	106	755
	% in 2yrs.	48.5	42.3	39.5	41.4	46.7	34.8	38.8	Inc	41.7
Region 4	Failed	31	24	49	18	28	32	11	Inc	193
	% in 3yrs.	58.1	46.4	46.0	45.7	53.9	37.8	Inc	Inc	47.9
	Failed	29	9	19	12	25	11	Inc	Inc	105
	Releases	71	51	134	111	86	89	39	124	705
	% in 1yr.	45.1	47.1	32.8	29.7	39.5	25.8	30.8	30.6	34.0
	Failed	32	24	44	33	34	23	12	38	240
Region 5	% in 2yrs.	57.7	51.0	50.7	39.6	47.7	38.2	36	Inc	46.1
	Failed	9	2	24	11	7	11	2	Inc	66
	% in 3yrs.	60.6	52.9	56.7	45.9	55.8	43	Inc	Inc	52.2
	Failed	2	1	8	7	7	4	Inc	Inc	29
	Releases	47	31	134	114	143	103	71	194	837
	% in 1yr.	44.7	29.0	23.1	35.1	42.7	30.1	50.7	23.2	32.7
All Regions Combined	Failed	21	9	31	40	61	31	36	45	274
	% in 2yrs.	57.4	35.5	35.8	49.1	52.4	40.8	56.3	Inc	46.5
	Failed	6	2	17	16	14	11	4	Inc	70
	% in 3yrs.	57.4	41.9	47.8	57.0	58.0	44.7	Inc	Inc	52.1
	Failed	2	16	9	8	4	4	Inc	Inc	39
	Releases	513	390	671	674	739	791	419	1,075	5,272
All Regions Combined	% in 1yr.	37.6	34.4	24.3	34.0	36.9	26.4	36.8	24.9	30.8
	Failed	193	134	163	229	273	209	154	268	1,623
	% in 2yrs.	48.9	43.8	39.5	43.2	45.9	37.2	43.0	Inc	42.7
	Failed	58	37	102	62	66	85	26	Inc	436
	% in 3yrs.	57.1	47.9	47.2	48.8	52.6	40.8	Inc	Inc	48.7
	Failed	42	16	52	38	51	29	Inc	Inc	228

Inc=Follow-up period incomplete.

Table 13

**COMBINED COMMITMENT PROGRAMS: Recidivism Rates for FY98 - FY05 by Region**

Region	Follow-Up Period	Number of Releases, Failures and Cumulative % Recidivism by Cohort								
		FY98	FY99	FY00	FY01	FY02	FY03	FY04	FY05	Totals (FY98-05)
Region 1	Releases	334	332	438	396	358	423	368	409	3,058
	% in 1yr.	30.5	33.1	22.8	25.5	31.8	32.2	26.9	22.2	27.9
	Failed	104	110	100	102	114	136	99	91	856
	% in 2yrs.	45.5	44.9	38.6	35.6	45.0	43.7	33.7	Inc	40.8
	Failed	52	39	70	40	48	49	25	Inc	323
	% in 3yrs.	53.3	52.7	47.0	42.2	49.7	47.8	Inc	Inc	48.5
	Failed	27	26	38	27	18	17	Inc	Inc	153
Region 2	Releases	313	309	351	390	315	421	330	373	2,802
	% in 1yr.	26.5	25.6	22.2	28.5	32.1	29.5	28.5	20.1	26.6
	Failed	83	79	78	111	101	124	94	75	745
	% in 2yrs.	46.6	39.8	39.3	39.7	44.4	42.5	37.3	Inc	41.3
	Failed	63	45	61	45	40	55	29	Inc	338
	% in 3yrs.	55.3	46.9	46.7	44.1	52.7	46.1	Inc	Inc	48.3
	Failed	27	23	27	17	26	15	Inc	Inc	135
Region 3	Releases	913	864	837	842	808	1,067	996	1,087	7,414
	% in 1yr.	34.5	26.0	21.4	27.1	33.2	27.7	28.1	20.7	27.2
	Failed	315	225	180	228	268	296	280	225	2,017
	% in 2yrs.	46.5	37.8	39.1	36.9	41.7	38.2	36.5	Inc	39.5
	Failed	110	106	150	86	69	112	85	Inc	718
	% in 3yrs.	55.3	45.1	47.2	43.0	49.5	43.8	Inc	Inc	47.3
	Failed	80	63	68	53	63	59	Inc	Inc	386
Region 4	Releases	407	448	513	474	459	414	322	417	3,454
	% in 1yr.	38.1	40.4	28.3	27.2	34.6	30.0	30.7	27.3	32.0
	Failed	155	181	145	129	159	124	99	114	1,106
	% in 2yrs.	54.1	57.4	47.6	39.5	49.0	45.9	41.3	Inc	47.9
	Failed	65	77	99	59	66	66	34	Inc	466
	% in 3yrs.	64.4	62.1	57.3	46.0	58.2	50.7	Inc	Inc	56.3
	Failed	42	23	50	31	42	20	Inc	Inc	208
Region 5	Releases	547	494	621	578	513	547	588	663	4,551
	% in 1yr.	31.4	28.1	23.8	28.2	35.5	31.6	33.0	21.9	28.9
	Failed	172	139	148	164	182	173	194	145	1,317
	% in 2yrs.	47.5	42.7	42.2	42.9	48.3	43.7	40.5	Inc	43.9
	Failed	88	76	114	86	66	66	44	Inc	540
	% in 3yrs.	56.5	49.4	53.3	49.1	54.0	48.8	Inc	Inc	51.9
	Failed	49	33	71	37	29	28	Inc	Inc	247
All Regions Combined	Releases	2,514	2,447	2,760	2,680	2,453	2,872	2,604	2,949	21,279
	% in 1yr.	32.9	30.0	23.6	27.3	33.6	29.7	29.4	22.0	28.4
	Failed	829	734	651	734	824	853	766	650	6,041
	% in 2yrs.	47.9	43.6	41.3	38.9	45.3	41.8	37.7	Inc	42.3
	Failed	378	343	494	316	289	348	217	Inc	2,385
	% in 3yrs.	56.8	50.3	50.4	44.9	52.5	46.7	Inc	Inc	50.1
	Failed	225	168	254	165	178	139	Inc	Inc	1,129

Inc=Follow-up period incomplete.

## **APPENDIX C**

### **Tables 14 – 19**

#### **FY98 – FY05 TTF and Recidivism Rates by DJJ Region**

Table 14

All DJJ Regions: Mean Time (Days) to Failure (MTTF) and Recidivism Rates for FY98 - FY05 Cohorts

Type of Program	Failure Period	Mean Time to Failure by Release Cohort								Totals (FY98-05)
		FY98	FY99	FY00	FY01	FY02	FY03	FY04	FY05	
Probation (A)	MTTF 1yr.	176	185	197	177	203	142	149	167	171
	1yr Failures	657	934	1,144	1,801	927	1,754	1,479	1,479	10,175
	1yr Recidivism Rate	6.1	9.2	12.1	21.4	10.6	23.1	18.8	15.5	14.2
STP (B)	MTTF 1yr.	142	131	130	135	124	132	133	173	135
	1yr Failures	1,820	2,225	2,073	1,569	1,707	1,294	1,383	685	12,756
	1yr Recidivism Rate	36.1	46.9	44.3	40.6	43.6	35.5	43.7	21.3	39.8
YDC Commitments (C)	MTTF 1yr.	158	170	187	176	137	142	158	166	161
	1yr Failures	395	384	318	275	347	294	224	162	2,399
	1yr Recidivism Rate	28.4	27.3	24.7	25.7	35.7	33.5	30.0	20.9	27.9
Non-Secure Residential Commitments (D)	MTTF 1yr.	137	138	193	141	142	152	183	164	157
	1yr Failures	241	216	170	230	204	350	388	220	2,019
	1yr Recidivism Rate	31.5	30.6	23.1	28.3	29.0	28.6	26.9	19.3	26.8
Home Commitments (E)	MTTF 1yr.	88	99	152	108	88	122	120	164	140
	1yr Failures	193	134	163	229	273	209	154	268	1,623
	1yr Recidivism Rate	37.6	34.4	24.3	34.0	36.9	26.4	36.8	24.9	30.8
Combined Commitment Programs (C-E)	MTTF 1yr.	136	147	180	144	122	141	163	159	148
	1yr Failures	829	734	651	734	824	853	766	650	6,041
	1yr Recidivism Rate	31.4	28.1	23.8	28.2	35.5	31.6	33.0	21.9	28.9
All Programs Combined (A-E)	MTTF 1yr.	147	147	158	155	145	138	146	166	150
	1yr Failures	3,306	3,893	3,868	4,104	3,458	3,901	3,628	2,814	28,972
	1yr Recidivism Rate	19.0	22.7	23.0	26.5	23.4	27.3	25.9	20.0	23.4

Table 15

## Region 1: Mean Time (Days) to Failure (MTTF) and Recidivism Rates for FY98 - FY05 Cohorts

Type of Program	Failure Period	Mean Time to Failure by Release Cohort								Totals (FY98-05)
		FY98	FY99	FY00	FY01	FY02	FY03	FY04	FY05	
Probation (A)	MTTF 1yr.	176	185	190	174	185	144	157	163	170
	1yr Failures	113	136	194	285	150	228	217	265	1,588
	1yr Recidivism Rate	7.4	9.3	12.4	22.2	11.3	18.2	15.3	17.0	13.9
STP (B)	MTTF 1yr.	156	154	138	137	124	134	151	173	145
	1yr Failures	237	287	310	192	204	173	208	105	1,716
	1yr Recidivism Rate	29.3	42.5	44.5	32.4	36.2	28.0	29.6	21.9	33.4
YDC Commitments (C)	MTTF 1yr.	210	173	208	193	147	151	155	99	176
	1yr Failures	54	54	46	32	57	33	15	11	302
	1yr Recidivism Rate	33.5	30.7	23.1	20.1	40.1	39.8	20.8	18.6	28.7
Non-Secure Residential Commitments (D)	MTTF 1yr.	118	144	218	135	129	134	205	153	158
	1yr Failures	31	37	38	34	27	64	59	35	325
	1yr Recidivism Rate	28.4	35.6	22.8	27.0	25.5	32.0	25.9	19.1	26.6
Home Commitments (E)	MTTF 1yr.	116	113	132	115	74	188	136	163	150
	1yr Failures	19	19	16	36	30	39	25	45	229
	1yr Recidivism Rate	27.1	36.5	22.2	31.3	27.3	27.9	36.8	26.9	28.8
Combined Commitment Programs (C-E)	MTTF 1yr.	165	153	200	146	123	154	180	154	158
	1yr Failures	104	110	100	102	114	136	99	91	856
	1yr Recidivism Rate	30.5	33.1	22.8	25.5	31.8	32.2	26.9	22.2	27.9
All Programs Combined (A-E)	MTTF 1yr.	163	162	165	157	144	143	159	163	157
	1yr Failures	454	533	604	579	468	537	524	461	4,160
	1yr Recidivism Rate	16.9	21.5	22.4	25.5	20.9	23.4	21.1	18.8	21.2

Table 16

## Region 2: Mean Time (Days) to Failure (MTTF) and Recidivism Rates for FY98 - FY05 Cohorts

Type of Program	Failure Period	Mean Time to Failure by Release Cohort								Totals (FY98-05)
		FY98	FY99	FY00	FY01	FY02	FY03	FY04	FY05	
Probation (A)	MTTF 1yr.	183	193	212	191	222	145	146	165	176
	1yr Failures	132	221	276	419	255	502	410	298	2,513
	1yr Recidivism Rate	6.0	9.6	13.2	20.2	11.6	25.3	20.5	16.6	15.1
STP (B)	MTTF 1yr.	153	133	142	151	133	135	151	171	144
	1yr Failures	247	374	338	250	273	216	249	133	2,080
	1yr Recidivism Rate	30.5	44.8	42.0	34.2	37.6	33.8	32.8	21.1	35.1
YDC Commitments (C)	MTTF 1yr.	154	180	204	182	167	151	171	162	171
	1yr Failures	45	46	39	41	55	49	36	21	332
	1yr Recidivism Rate	23.7	25.4	21.5	21.1	39.0	37.4	33.0	26.6	27.5
Non-Secure Residential Commitments (D)	MTTF 1yr.	120	145	205	123	146	161	193	163	158
	1yr Failures	33	20	33	48	33	55	46	20	288
	1yr Recidivism Rate	32.7	21.7	25.4	33.8	26.8	27.6	24.7	13.8	25.8
Home Commitments (E)	MTTF 1yr.	88	116	182	109	92	164	127	161	154
	1yr Failures	5	13	6	22	13	20	12	34	125
	1yr Recidivism Rate	22.7	36.1	15.0	40.7	25.5	22.0	34.3	22.8	26.2
Combined Commitment Programs (C-E)	MTTF 1yr.	137	161	203	142	151	157	176	155	159
	1yr Failures	83	79	78	111	101	124	94	75	745
	1yr Recidivism Rate	26.5	25.6	22.2	28.5	32.1	29.5	28.5	20.1	26.6
All Programs Combined (A-E)	MTTF 1yr.	159	156	177	171	172	143	151	165	161
	1yr Failures	462	674	692	780	629	842	753	506	5,338
	1yr Recidivism Rate	13.9	19.6	21.3	24.4	19.5	27.6	24.4	18.1	21.0



Table 17

## Region 3: Mean Time (Days) to Failure (MTTF) and Recidivism Rates for FY98 - FY05 Cohorts

Type of Program	Failure Period	Mean Time to Failure by Release Cohort								Totals (FY98-05)
		FY98	FY99	FY00	FY01	FY02	FY03	FY04	FY05	
Probation (A)	MTTF 1yr.	195	192	176	183	185	131	150	165	167
	1yr Failures	82	111	163	233	114	226	223	336	1,488
	1yr Recidivism Rate	7.3	8.5	11.7	19.4	9.6	21.9	21.5	23.6	15.3
STP (B)	MTTF 1yr.	135	124	126	129	117	138	138	175	130
	1yr Failures	474	534	501	337	416	275	244	121	2,902
	1yr Recidivism Rate	32.6	39.7	39.3	30.0	36.1	26.8	26.9	17.8	32.4
YDC Commitments (C)	MTTF 1yr.	137	161	172	168	127	144	165	164	153
	1yr Failures	119	80	71	68	69	85	65	36	593
	1yr Recidivism Rate	35.6	22.5	21.1	21.6	26.3	31.6	30.5	17.5	25.9
Non-Secure Residential Commitments (D)	MTTF 1yr.	131	154	185	154	144	156	176	173	160
	1yr Failures	80	76	43	62	64	115	146	83	669
	1yr Recidivism Rate	29.0	26.4	20.0	25.1	32.5	26.7	25.3	18.9	25.1
Home Commitments (E)	MTTF 1yr.	87	105	159	112	93	106	137	159	129
	1yr Failures	116	69	66	98	135	96	69	106	755
	1yr Recidivism Rate	38.3	31.4	22.7	35.0	38.7	26.1	33.5	24.0	30.7
Combined Commitment Programs (C-E)	MTTF 1yr.	117	142	170	140	114	137	164	156	140
	1yr Failures	315	225	180	228	268	296	280	225	2,017
	1yr Recidivism Rate	34.5	26.0	21.4	27.1	33.2	27.7	28.1	20.7	27.2
All Programs Combined (A-E)	MTTF 1yr.	134	137	145	148	125	135	151	164	142
	1yr Failures	871	870	844	798	798	797	747	682	6,407
	1yr Recidivism Rate	24.9	24.7	24.0	25.2	25.3	25.5	25.4	21.4	24.5

Table 18

## Region 4: Mean Time (Days) to Failure (MTTF) and Recidivism Rates for FY98 - FY05 Cohorts

Type of Program	Failure Period	Mean Time to Failure by Release Cohort								Totals (FY98-05)
		FY98	FY99	FY00	FY01	FY02	FY03	FY04	FY05	
Probation (A)	MTTF 1yr.	161	168	193	172	201	149	150	176	169
	1yr Failures	208	285	270	475	239	449	352	324	2,602
	1yr Recidivism Rate	7.7	10.4	12.0	23.8	13.3	25.7	24.2	20.6	16.0
STP (B)	MTTF 1yr.	134	130	127	132	121	129	140	180	133
	1yr Failures	450	556	504	409	445	340	323	200	3,227
	1yr Recidivism Rate	40.4	51.5	49.7	40.0	46.7	42.8	38.0	28.5	42.9
YDC Commitments (C)	MTTF 1yr.	150	173	182	167	138	121	180	178	161
	1yr Failures	86	114	79	63	92	57	48	48	587
	1yr Recidivism Rate	36.4	37.1	25.9	24.5	35.5	34.1	32.2	27.7	31.7
Non-Secure Residential Commitments (D)	MTTF 1yr.	143	134	163	163	149	136	170	153	150
	1yr Failures	37	43	22	33	33	44	39	28	279
	1yr Recidivism Rate	37.0	47.8	29.7	31.1	28.9	27.8	29.1	23.3	31.1
Home Commitments (E)	MTTF 1yr.	78	81	158	115	78	63	42	172	146
	1yr Failures	32	24	44	33	34	23	12	38	240
	1yr Recidivism Rate	45.1	47.1	32.8	29.7	39.5	25.8	30.8	30.6	34.0
Combined Commitment Programs (C-E)	MTTF 1yr.	134	152	172	153	127	116	159	163	146
	1yr Failures	155	181	145	129	159	124	99	114	1,106
	1yr Recidivism Rate	38.1	40.4	28.3	27.2	34.6	30.0	30.7	27.3	32.0
All Programs Combined (A-E)	MTTF 1yr.	141	145	153	153	145	137	147	175	149
	1yr Failures	813	1,022	919	1,013	843	913	774	638	6,935
	1yr Recidivism Rate	19.3	24.0	24.3	29.0	26.2	30.9	29.5	23.7	25.5

Table 19

## Region 5: Mean Time (Days) to Failure (MTTF) and Recidivism Rates for FY98 - FY05 Cohorts

Type of Program	Failure Period	Mean Time to Failure by Release Cohort								Totals (FY98-05)
		FY98	FY99	FY00	FY01	FY02	FY03	FY04	FY05	
Probation (A)	MTTF 1yr.	182	199	203	168	206	139	144	163	170
	1yr Failures	122	181	241	389	169	349	277	256	1,984
	1yr Recidivism Rate	6.1	9.2	12.1	21.4	10.6	23.1	18.8	15.5	14.2
STP (B)	MTTF 1yr.	144	125	124	133	130	125	102	160	128
	1yr Failures	412	474	420	381	369	290	359	126	2,831
	1yr Recidivism Rate	36.1	46.9	44.3	40.6	43.6	35.5	43.7	21.3	39.8
YDC Commitments (C)	MTTF 1yr.	164	167	187	181	116	145	124	171	158
	1yr Failures	91	90	83	71	74	70	60	46	585
	1yr Recidivism Rate	28.4	27.3	24.7	25.7	35.7	33.5	30.0	20.9	27.9
Non-Secure Residential Commitments (D)	MTTF 1yr.	159	101	181	133	140	166	182	169	158
	1yr Failures	60	40	34	53	47	72	98	54	458
	1yr Recidivism Rate	33.3	30.1	22.5	27.7	28.8	30.6	30.9	21.7	28.3
Home Commitments (E)	MTTF 1yr.	83	40	136	85	89	107	99	163	134
	1yr Failures	21	9	31	40	61	31	36	45	274
	1yr Recidivism Rate	44.7	29.0	23.1	35.1	42.7	30.1	50.7	23.2	32.7
Combined Commitment Programs (C-E)	MTTF 1yr.	153	140	175	142	113	147	149	168	147
	1yr Failures	172	139	148	164	182	173	194	145	1,317
	1yr Recidivism Rate	31.4	28.1	23.8	28.2	35.5	31.6	33.0	21.9	28.9
All Programs Combined (A-E)	MTTF 1yr.	153	144	157	149	144	136	127	164	146
	1yr Failures	706	794	809	934	720	812	830	527	6,132
	1yr Recidivism Rate	19.1	22.9	22.8	28.0	24.3	28.2	28.7	18.1	23.9



## **APPENDIX D**

### **Offenses Defining Recidivism**

## Conviction for a New Offense Defined

Convicted for a new offense. Not a revocation or administrative action must be Probation, STP, STP/Probation, STP/CMT, Regular Commitment, Designated Felony Commitment, Superior Court Commitment, or a conviction resulting in Adult probation or Adult Prison). The offense itself must be considered a crime as an adult. All technical violations and status offenses are not new offenses as well as minor traffic (i.e., speeding, failure to yield, traffic), loitering, and contempt of court). All non-offense codes are listed below.

Release Cohorts. Only the first release within the fiscal year will be followed making the release cohorts unduplicated within the year.

### Legal Actions to Exclude

Rank	Description
0	Revocation-Administrative action
0	Informal Adjustments-Administrative action
0	Abeyance
-1	Suspension
-1	Dismissal
-1	Withheld

### Legal Actions To Include

Rank	Description
1	<b>Probation</b>
2	<b>STP</b>
3	<b>STP+Probation</b>
4	<b>STP+CMT</b>
5	<b>Regular Commitment</b>
6	<b>Designated Felon Commitment</b>
7	<b>Superior Court Commitment</b>
8	<b>Adult Probation</b>
9	<b>Adult Prison</b>

### New Offenses

GA Code	Description	Oftype	M/F
16-6-19	ADULTERY	5	M
16-12-26	ADVERTISE COMMERCIAL GAMBLING	4	M
16-11-4	ADVOCATING OVERTHROW OF GOVERNMENT	4	F
16-11-32	AFFRAY	4	M
16-5-21	AGGRAVATED ASSAULT	8	F
16-5-21.1	AGGRAVATED ASSAULT WITH INTENT TO RAPE OR ROB	8	F
16-5-24	AGGRAVATED BATTERY	8	F
16-6-4	AGGRAVATED CHILD MOLESTATION	9	F
16-12-4(C)	AGGRAVATED CRUELTY TO ANIMALS	8	F
16-6-22.2	AGGRAVATED SEXUAL BATTERY	9	F
16-6-2	AGGRAVATED SODOMY	9	F
16-5-91	AGGRAVATED STALKING	8	F
16-10-53	AID/PERMIT ANOTHER TO ESCAPE LAWFUL CUSTODY/CONFINEMENT	4	F
16-12-120.1	ALTERED/SALE/EXCHANGE OF FARE COINS/NOTES/TOKENS/CARDS/TICKETS	4	M
16-8-41	ARMED ROBBERY	8	F
16-7-60	ARSON-FIRST DEGREE	8	F
16-7-61	ARSON-SECOND DEGREE	8	F
16-7-62	ARSON-THIRD DEGREE	3	F
16-10-54	ASSAIL/OPPOSE/RESIST OFFICER OF THE LAW IN A PENAL INSTITUTION	8	F
16-10-32	ATTEMPTED MURDER/THREATENING A WITNESS IN OFFICIAL PROCEEDINGS	4	F
16-10-51	BAIL JUMPING	4	F

16-5-23.1(I)	BATTERY-SCHOOL OFFICIAL	8	F
16-6-6	BESTIALITY	5	M
16-6-20	BIGAMY	4	F
16-10-2	BRIBERY	4	M
16-7-1	BURGLARY	3	F
16-7-28	BURNING WOODLANDS/BRUSH/FIELDS /LANDS;DAMAGE TO WILDFIRE DETECTION EQP	3	F
16-12-123	BUS/RAIL VEHICLE HIJACKING/BOARDING W/CONCEALED WEAPON	8	F
16-11-126	CARRY A CONCEALED WEAPON	11	M
16-11-127	CARRY DEADLY WEAPONS TO OR AT PUBLIC GATHERINGS	11	M
16-11-126	CARRYING A CONCEALED WEAPON	11	F
16-11-128	CARRYING PISTOL WITHOUT LICENSE	11	M
16-11-127.1	CARRYING WEAPONS W/IN SCHOOL SAFETY ZONES/FUNCTIONS/PROPERTY	11	F
16-12-120	CERTAIN ACTS IN PUBLIC TRANSIT BUSES/RAPID RAIL CARS/STATIONS	4	M
16-6-4	CHILD MOLESTATION	9	F
16-12-22	COMMERCIAL GAMBLING	4	F
16-12-28	COMMUNICATING GAMBLING INFORMATION	4	F
16-10-31	CONCEALING DEATH OF ANOTHER PERSON	4	F
16-4-8	CONSPIRACY TO COMMIT A CRIME ** DO NOT SHOW TO DJJ AS A CHOICE		M
16-4-8	CONSPIRACY TO COMMIT A CRIME/AGGRAVATED ASSAULT	4	F
16-4-8	CONSPIRACY TO COMMIT A CRIME/ARMED ROBBERY	8	F
16-4-8	CONSPIRACY TO COMMIT A CRIME/MURDER	8	F
16-4-8	CONSPIRACY TO COMMIT A CRIME/ROBBERY	8	F
16-4-8	CONSPIRACY TO COMMIT A CRIME/THEFT BY TAKING	3	F
16-4-8	CONSPIRACY TO COMMIT CRIME/CRIMINAL DAMAGE TO PROPERTY-FIRST DEGREE	3	F
16-4-8	CONSPIRACY TO COMMIT CRIME/SIMPLE BATTERY	4	M
16-12-1	CONTRIBUTING TO THE DELINQUENCY/UNRULINESS/DEPRIVATION OF A MINOR	4	M
16-12-1	CONTRIBUTING TO THE DELINQUENCY/UNRULINESS/DEPRIVATION OF A MINOR	4	F
16-8-15	CONVERSION OF PAYMENTS FOR REAL PROPERTY IMPROVEMENTS	3	F
16-9-5	COUNTERFEIT OR FALSE PROOF OF INSURANCE DOCUMENT	4	F
16-9-5	COUNTERFEIT/FALSE PROOF OF INSURANCE DOCUMENT	4	M
16-9-2	CRIM USE OF ARTICLE WITH ALTERED IDENT MARK/FORGERY-2ND DEGREE	3	F
16-12-140	CRIMINAL ABORTION	8	F
16-4-1	CRIMINAL ATTEMPT/AGGRAVATED ASSAULT	8	F
16-4-1	CRIMINAL ATTEMPT/ARMED ROBBERY	8	F
16-4-1	CRIMINAL ATTEMPT/ARSON	3	F
16-4-1	CRIMINAL ATTEMPT/BATTERY	4	M
16-4-1	CRIMINAL ATTEMPT/BURGLARY	3	F
16-4-1	CRIMINAL ATTEMPT/CHILD MOLESTATION	9	F
16-4-1	CRIMINAL ATTEMPT/ESCAPE	4	M
16-4-1	CRIMINAL ATTEMPT/ESCAPE	4	F
16-4-1	CRIMINAL ATTEMPT/KIDNAPPING	8	F
16-4-1	CRIMINAL ATTEMPT/MURDER	8	F
16-4-1	CRIMINAL ATTEMPT/RAPE	9	F
16-4-1	CRIMINAL ATTEMPT/ROBBERY	8	F
16-4-1	CRIMINAL ATTEMPT/SEXUAL BATTERY	9	M
16-4-1	CRIMINAL ATTEMPT/SODOMY	9	F
16-4-1	CRIMINAL ATTEMPT/THEFT BY TAKING	3	M
16-4-1	CRIMINAL ATTEMPT/THEFT BY TAKING	3	F
16-7-22	CRIMINAL DAMAGE TO PROPERTY-FIRST DEGREE	3	F
16-7-23	CRIMINAL DAMAGE TO PROPERTY-SECOND DEGREE	3	F
16-11-40	CRIMINAL DEFAMATION	4	M

16-9-34	CRIMINAL POSSESSION OF FINANCIAL TRANSACTION CARD	3	M
16-9-35	CRIMINAL RECEIPT OF GOODS/SERVICES FRAUDENTLY OBTAINED	3	M
16-4-7	CRIMINAL SOLICITATION	4	M
16-4-7	CRIMINAL SOLICITATION/MURDER	8	F
16-7-21	CRIMINAL TRESPASS	3	M
16-7-29	CRIMINAL TRESSPASS BY MOTOR VEHICLE	3	F
16-9-70	CRIMINAL USE OF ALTERED ID ARTICLE	3	F
16-12-4	CRUELTY TO ANIMALS	4	M
16-5-70	CRUELTY TO CHILDREN	8	F
16-7-25	DAMAG/INJURING/INTERF W/PROP OF PUB UTIL/MUNICIP/POLITIC SUBDIVISIONS	3	M
16-7-27	DAMAGE/DESTROY/DEFACE MAILBOXES/MAIL	3	F
16-9-20	DEPOSIT ACCOUNT FRAUD	3	F
16-11-107	DESTROYING/INJURING POLICE DOG/POLICE HORSE	8	F
16-11-105	DISCHARGE OF FIREARM ON SUNDAY	11	M
16-11-104	DISCHARGE OF FIREARMS ON PROPERTY OF ANOTHER	11	M
16-11-103	DISCHARGE OF GUN/PISTOL NEAR PUBLIC HIGHWAY/STREET	11	M
16-11-39	DISORDERLY CONDUCT	11	F
20-2-1181	DISRUPTING PUBLIC SCHOOL	4	M
16-11-37.1	DISSEMINATION OF INFO RELATING TO TERRORISTIC ACTS	4	M
16-12-80	DISTRIBUTING OBSCENE MATERIAL	5	M
27-3-15	DNR VIOLATION	11	M
16-12-37	DOGFIGHTING	8	F
40-6-391	DRIVING UNDER THE INFLUENCE OF ALC/DRUGS/INTOXICATING SUBSTANCE	2	M
16-13-75	DRUGS TO BE KEPT IN ORIGINAL CONTAINER	2	M
40-6-273	DUTY TO REPORT ACCIDENT RESULTING IN INJURY/DEATH/PROPERTY DAMAGE	7	M
20-2-1183	ELECTRONIC PAGERS PROHIBITED	4	M
16-12-100.1	ELECTRONICALLY FURNISHING OBSCENE MATERIAL TO MINOR	5	M
16-8-18	ENTERING MOTOR VEHICLE WITH INTENT TO COMMIT THEFT/FELONY	3	F
16-6-5	ENTICING A CHILD FOR INDECENT PURPOSES	5	F
16-10-52(b)	ESCAPE	4	F
16-10-52	ESCAPE	4	M
16-5-41	FALSE IMPRISONMENT	8	F
16-5-42	FALSE IMPRISONMENT UNDER COLOR OF LEGAL PROCESS	4	F
16-10-26	FALSE REPORT OF A CRIME	4	M
16-10-20	FALSE STATEMENTS/WRITINGS/CONCEALMENT OF FACTS/FRAUDULENT DOCUMENTS	4	F
16-5-80	FETICIDE	8	F
16-9-121	FINANCIAL IDENTITY FRAUD	3	F
16-9-32	FINANCIAL TRANSACTION CARD FORGERY	3	F
16-9-33	FINANCIAL TRANSACTION CARD FRAUD	3	F
16-9-31	FINANCIAL TRANSACTION CARD THEFT	3	F
40-6-395	FLEEING/ATTEMPTING TO ELUDE POLICE OFFICERS/IMPERSONATING AN OFFICER	7	F/M
16-13-43(a)5	FORGED OR COUNTERFEIT TRADEMARK	3	F
16-9-1	FORGERY-FIRST DEGREE	3	F
16-6-18	FORNICATION	5	M
16-9-56	FRAUDULENT ATTEMPTS TO OBTAIN REFUNDS	3	M
16-11-101	FURNISHING METAL KNUCKLES/KNIFE TO PERSON UNDER AGE 18 YEARS	11	M
16-11-101.1	FURNISHING PISTOL/REVOLVER TO PERSON UNDER AGE 18 YEARS	11	M
16-12-21	GAMBLING	4	M
16-10-25	GIVING FALSE NAME/ADDRESS/BIRTHDATE TO LAW ENFORCEMENT OFFICER	4	M
16-6-17	GIVING MESSAGES IN PLACES USED FOR LEWDNESS/PROSTITUTION/ASSIGNATION	5	M
16-11-39.1	HARASSING PHONE CALLS	4	M



16-5-61	HAZING	4	M
16-5-44.1	HIJACKING A MOTOR VEHICLE	8	F
16-5-44	HIJACKING AN AIRCRAFT	3	F
16-10-50	HINDER APPREHENSION/PUNISHMENT OF CRIMINAL	4	F
16-7-85	HOAX DEVICES	3	M
16-7-85	HOAX DEVICES	3	F
52-7-12.2	HOMICIDE BY VESSEL	8	F
52-7-12.2	HOMICIDE BY VESSEL	8	M
16-10-23	IMPERSONATING A PUBLIC OFFICER/EMPLOYEE	4	F
16-9-52	IMPROPER SOLICITATION OF MONEY	4	M
16-6-22	INCEST	5	F
16-11-31	INCITING A RIOT	4	M
16-10-93	INFLUENCING WITNESSES	4	M
16-13-91	INTENTIONAL INHALATION OF MODEL GLUE	2	M
16-5-45	INTERFERENCE WITH CUSTODY	4	M
16-7-24(b)	INTERFERENCE WITH GOVERNMENT PROPERTY	3	M
16-7-24(a)	INTERFERENCE WITH GOVERNMENT PROPERTY	3	F
16-10-97	INTIMIDATION/INJURY OF GRAND/PETIT JUROR/COURT OFFICER	4	F
16-5-3	INVOLUNTARY MANSLAUGHTER	8	F
16-5-3	INVOLUNTARY MANSLAUGHTER	8	M
16-5-40	KIDNAPPING	8	F
16-7-43	LITTERING PUBLIC OR PRIVATE PROPERTY OR WATERS	3	M
16-8-20	LIVESTOCK THEFT	3	F
16-8-20	LIVESTOCK THEFT	3	M
16-11-36	LOITERING OR PROWLING	4	M
50-27-27	LOTTERY TICKET MAKE/ALTER/FORGE/UTTER/PASS/COUNTERFEIT	3	F
50-27-28	LOTTERY TICKET MAKE/ENTER FALSE STATEMENT IN BOOK OR RECORD	3	F
16-11-44	MAINTAINING A DISORDERLY HOUSE	4	M
16-5-43	MALICIOUS CONFINEMENT OF SANE PERSON IN AN ASYLUM	8	F
16-13-30(b)	MANUF/DIS/Disp/ADMIN/SELL/POSS W/INTENT SELL OF CONTROLLED SUBSTANCE	2	F
16-13-30(b)	MANUF/DIS/Disp/ADMIN/SELL/POSS W/INTENT SELL OF CONTROLLED SUBSTANCE	2	M
16-13-32.5	MANUF/DISTRIB/DispENS/POSS OF CONTROLLED SUBST NEAR PARK/HOUSING PRJ	1	F
16-13-32.4	MANUF/DISTRIB/DispENS/POSS OF CONTROLLED SUBSTANCE IN/AT/NEAR SCHOOLS	1	F
16-13-30.1	MANUF/DISTRIB/DispENS/POSS W/INTENT TO DISTRIB IMITATION CONTR SUBST	1	F
16-7-82	MANUF/TRANSP/DISTRIB/POSS W/INTENT TO DISTRIB EXPLOSIVE DEVICE	4	F
16-6-21	MARRYING A BIGAMIST	4	F
16-6-16	MASTURBATION FOR HIRE	5	M
16-9-93.1	MISLEADING TRANSMITTAL/USE OF IND NAME/TRADEMARK OVER COMPUTER/TELEP	3	M
16-5-1	MURDER	8	F
16-6-7	NECROPHILIA	5	F
16-11-43	OBSTRUCT HIGHWAYS/STREETS/SIDEWALKS/OTHER PUBLIC PASSAGES	4	M
16-10-24	OBSTRUCT/HINDER LAW ENFORCEMENT OFFICERS	4	M
16-10-24.2	OBSTRUCTING/HINDERING EMERG MEDICAL TECHNICIANS/PROFESSIONALS	4	F
16-10-24.1	OBSTRUCTING/HINDERING FIREFIGHTERS	4	F
16-10-24	OBSTRUCTING/HINDERING LAW ENFORCEMENT OFFICERS	4	F
16-10-24.3	OBSTRUCTING/HINDERING PERSONS MAKING EMERGENCY TELEPHONE CALLS	4	M
16-5-5	OFFER TO ASSIST IN COMMISSION OF SUICIDE	4	F
52-7-12	OPERATION OF WATERCRAFT WHILE UNDER INFLUENCE OF ALCOHOL/DRUGS	4	M
16-6-14	PANDERING	5	F/M
16-15-4	PARTICIPATION IN CRIMINAL STREET GANG ACTIVITY PROHIBITED	4	M
16-11-61	PEEPING TOMS	5	M

16-13-3	PENALTY FOR ABANDONMENT OF DANG DRUGS/POISONS/CONTROLLED SUBST	2	M
16-10-70	PERJURY	4	F
16-10-55	PERSUADE/ENTICE/INSTIGATE/AID/ABETE TO COMMIT MUTINY	4	F
20-2-751.5	PHYSICAL ASSAULT OF A FACULTY MEMBER	4	M
16-5-71.1	PIERCING OF THE BODY	4	M
16-6-11	PIMPING	5	M
16-11-102	POINTING/AIMING GUN/PISTOL AT ANOTHER	11	M
16-11-106	POSS OF FIREARM/KNIFE DURING COMMISSION/ATTEMPT TO COMMIT CRIMES	11	F
16-11-131	POSS OF FIREARMS BY CONVICTED FELONS/FIRST OFFENDER PROBATIONERS	11	F
16-11-122	POSS OF SAWED-OFF SHOTGUN/RIFLE/MACHINE GUN/SILENCER/DANG PROHIB WEAP	11	F
16-13-30(j)	POSS/CONTROL/MANUF/DELIV/DIST /DISP/ADMIN/PURCH/SELL POSS W/ INTENT T	2	F
16-13-30(j)	POSS/CONTROL/MANUF/DELIV/DIST /DISP/ADMIN/PURCH/SELL POSS W/INTENT T	2	M
16-13-78.2	POSS/MANUF/DELIVERY/DISTRIB/SALE OF COUNTERFEIT SUBSTANCES	1	M
16-13-78.2	POSS/MANUF/DELIVERY/DISTRIB/SALE OF COUNTERFEIT SUBSTANCES	1	F
16-12-24	POSS/MANUF/TRANSF OF GAMBLING DEVICE/PARTS, POSS ANTIQUE SLOT MACHINE	4	M
16-7-88	POSS/TRANS EXPLOSIVES/DEVICES W/INTENT TO INTIMIDATE/KILL/DESTROY	4	F
25-10-2	POSS/USE/EXPLOSION OF FIREWORKS	11	M
16-13-30.2	POSSESSION OF IMITATION SUBSTANCE	2	F
16-11-132	POSSESSION OF PISTOL/REVOLVER BY PERSON UNDER AGE 18 YEARS	11	M
16-11-132	POSSESSION OF PISTOL/REVOLVER BY PERSON UNDER AGE 18 YEARS	11	F
16-7-20	POSSESSION OF TOOLS FOR THE COMMISSION OF CRIME	3	F
16-13-32.2	POSSESSION/USE OF DRUG RELATED OBJECTS	2	M
16-11-34	PREVENT/DISRUPT LAWFUL MEETINGS/GATHERINGS/PROCESSIONS	4	M
16-9-21	PRINT/EXECUTE/NEGOTIATE FICTITIOUS MONETARY INSTRUMENTS	3	F
16-9-4	PROHIBITION AGAINST KNOWINGLY MANUF/SELL/DISTRIB FALSE IDENT DOCUMENT	4	F
16-9-4	PROHIBITION AGAINST KNOWINGLY MANUF/SELL/DISTRIB FALSE IDENT DOCUMENT	4	M
16-6-9	PROSTITUTION	5	M
16-11-41	PUBLIC DRUNKENNESS	2	M
42-5-18	PROVIDE CONTRABAND TO AN INMATE OF A PENAL INSTITUTION	3	F
16-6-8	PUBLIC INDECENCY	5	M
16-13-1(C)	PURCHASE/OBTAIN DRUG RELATED OBJECTS BY MINOR	2	M
16-13-30(a)	PURCHASE/POSSESSION/CONTROL OF CONTROLLED SUBSTANCE	2	M
16-13-30(a)	PURCHASE/POSSESSION/CONTROL OF CONTROLLED SUBSTANCE	2	F
40-6-186	RACING ON HIGHWAYS OR STREETS	7	M
16-6-1	RAPE	9	F
16-5-72	RECKLESS ABANDONMENT	4	F
16-5-60(b)	RECKLESS CONDUCT CAUSING BODILY HARM/ENDANGERMENT OF ANOTHER	4	M
16-5-60©	RECKLESS CONDUCT CAUSING BODILY HARM/ENDANGERMENT OF ANOTHER	4	F
40-6-390(a)	RECKLESS DRIVING	7	M
16-10-30	REFUSAL TO OBEY OFFICIAL REQUEST AT FIRE/OTHER EMERGENCY	4	M
16-12-161	REMOVAL OF BODY PARTS FROM SCENE OF DEATH/DISEMBOWELMENT	4	M
16-8-21	REMOVAL/ABANDONMENT OF SHOPPING CARTS	3	M
16-10-33	REMOVAL/ATTEMPTED REMOVAL OF WEAPON FROM PUBLIC OFFICIAL	4	F
16-11-35	REMOVAL/FAILURE TO LEAVE FROM CAMPUS/FAC OF UNIVERSITY SYSTEM/SCHOOL	4	M
16-8-60	REPRODUCTION/TRANSFER/SALE OF RECORDED MATERIAL	3	F
16-10-29	REQUEST FOR AMBULANCE SERVICE WHEN NOT REASONABLY NEEDED	4	M
16-11-30	RIOT	4	M
16-10-56	RIOT IN A PENAL INSTITUTION	4	F
16-8-40	ROBBERY	8	F
16-8-41	ROBBERY BY INTIMIDATION	8	F

16-8-40.3	ROBBERY BY SUDDEN SNATCHING	8	F
25-10-2	SALE OF FIREWORKS	11	M
16-12-171	SALE/DISTRIB TO/POSS BY MINOR CIGARETTES/TOBACCO REL OBJECTS	6	S
16-13-72	SALE/DISTRIBUTION/POSSESSION OF DANGEROUS DRUG	1	M
10-1-310	SCALPING TICKETS FOR CERTAIN ATHLETIC CONTESTS/ENTERTAINMENT EVENTS	4	M
16-12-103	SELL/LOAN/DISTRIBUTE/EXHIBIT PRINTED MATERIAL TO MINOR	5	M
52-7-12.4	SERIOUS INJURY BY VESSEL	8	F
16-6-22.1	SEXUAL BATTERY	9	M
16-12-100	SEXUAL EXPLOITATION OF CHILDREN	5	F
16-5-20	SIMPLE ASSAULT	4	M
16-5-23	SIMPLE BATTERY	4	M
16-12-2	SMOKING IN PUBLIC PLACES	4	M
16-6-2	SODOMY	5	F
16-6-15	SOLICITATION OF SODOMY	5	M
16-6-15	SOLICITATION OF SODOMY	5	F
16-5-90	STALKING	4	M
16-5-90	STALKING	4	F
16-6-3	STATUTORY RAPE	5	F
16-6-3	STATUTORY RAPE	5	M
16-10-72	SUBORNATION OF PERJURY/FALSE SWEARING	4	F
16-8-41	TAKING CONTROLLED SUBSTANCE FROM PHARMACY	8	F
16-10-94	TAMPERING WITH EVIDENCE	4	M
16-5-71	TATTOOING	4	M
16-11-37	TERRORISTIC THREATS/ACTS	4	F
16-8-9	THEFT BY BRINGING STOLEN PROPERTY INTO STATE	3	F
16-8-4	THEFT BY CONVERSION	3	F
16-8-3	THEFT BY DECEPTION	3	M
16-8-3	THEFT BY DECEPTION	3	F
16-8-16	THEFT BY EXTORTION	3	F
16-8-8	THEFT BY RECEIVING PROPERTY STOLEN IN ANOTHER STATE	3	F
16-8-7	THEFT BY RECEIVING STOLEN PROPERTY	3	M
16-8-7	THEFT BY RECEIVING STOLEN PROPERTY	3	F
16-8-14	THEFT BY SHOPLIFTING	3	M
16-8-14	THEFT BY SHOPLIFTING	3	F
16-8-2	THEFT BY TAKING	3	F
16-8-2	THEFT BY TAKING	3	M
16-8-6	THEFT OF LOST/MISLAID PROPERTY	3	F
16-8-6	THEFT OF LOST/MISLAID PROPERTY	3	M
16-8-5	THEFT OF SERVICES	3	F
16-8-5	THEFT OF SERVICES	3	M
16-9-39	THEFT OF TELECOMMUNICATIONS SERVICES	3	F
16-8-13	THEFT OF TRADE SECRETS	3	M
16-8-13	THEFT OF TRADE SECRETS	3	F
40-6-270	TRAFFIC HIT-AND-RUN-DUTY OF DRIVER TO STOP AT/RETURN TO ACCIDENT	7	M
40-6-394	TRAFFIC-SERIOUS INJURY BY VEHICLE	8	F
16-13-31	TRAFFICKING IN COCAINE/ILLEGAL DRUGS/MARIJUANA /METHAMPHETAMINE	1	F
16-13-32.1	TRANSACTIONS IN DRUG RELATED OBJECTS	1	M
16-13-32.1	TRANSACTIONS IN DRUG RELATED OBJECTS	1	F
16-10-27	TRANSMIT FALSE REPORT OF FIRE	4	M
16-10-28	TRANSMITTING FALSE PUBLIC ALARM	4	F
10-2-14	UNAUTHORIZED COMMERCIAL ACTIVITY-GA WORLD CONGRESS CENTER	4	M

16-9-37(b)	UNAUTHORIZED USE OF FINANCIAL TRANSACTION CARD	3	M
16-9-37(a)	UNAUTHORIZED USE-FINANCIAL TRANSACTION CARD	3	F
16-11-33	UNLAWFUL ASSEMBLY	4	M
16-7-52	UNLAWFUL DUMPING	3	F
16-7-52	UNLAWFUL DUMPING	3	M
16-11-123	UNLAWFUL POSSESSION OF FIREARMS/WEAPONS	11	F
16-13-32.3	USE OF COMMUNICATION FACILITY TO VIOLATE VGCSA PROVISIONS	1	M
40-5-125	USE OF FALSE NAME IN APPLICATION	4	M
16-7-26	VANDALISM TO A PLACE OF WORSHIP	3	F
40-6-393.1	VEHICULAR FETICIDE-1ST DEGREE	8	F
40-6-393(a)	VEHICULAR HOMICIDE-FIRST DEGREE	8	F
40-6-393(b)	VEHICULAR HOMICIDE-SECOND DEGREE	8	M
16-13	VGCSA	2	M
16-5-2	VOLUNTARY MANSLAUGHTER	8	F
16-11-38	WEARING MASK/HOOD/DEVICE WHICH CONCEALS IDENTITY OF WEARER	4	M
<b>Non-Offenses</b>			
GA Code	Description	Oftype	M/F
15-11-5	CONTEMPT POWERS OF JUVENILE COURT	6	S
15-11-5	CONTEMPT POWERS OF JUVENILE COURT	4	M
15-11-2.6	DELINQUENCY	6	S
15-11-2-8	DEPRIVED	6	s
15-11-2.12(d)	DESERTION OF RESIDENCE	6	S
3-3-22	FURN ALCOHOLIC BEV TO INTOXICATED PERSON	2	M
3-3-23	FURNISHING/PURCHASE/POSS OF ALCOHOL BY PERSONS UNDER 21 YEARS OF AGE	2	S
37-3-1(4.b)	INVOLUNTARY TREATMENT ACT	4	M
20-2-1180	LOITER UPON SCHOOL PREMISES/WITHIN A SCHOOL SAFETY ZONE	4	M
15-11-2.12(e)	LOITERING IN PUBLIC 12 AM-5 AM/CURFEW VIOLATION	6	S
50-27-26	LOTTERY TICKET SALES TO MINORS	4	M
40-6-181	MAXIMUM LIMITS-SPEEDING	7	M
3-3-24	MINOR ENTERING A LIQUOR STORE	4	M
NA	ORDINANCE VIOLATION OTHER JURISDICTION	4	M
20-2-766.1	PARENTS FAILURE TO COOPERATE WITH SCHOOL	4	M
15-11-2.12(g)	PATRONIZATION OF BAR W/ALCOHOL W/O PARENT OR GUARDIAN	6	S
40-6-95	PEDESTRIAN UNDER INFLUENCE OF ALCOHOL/DRUG	4	M
3-3-21.1	POSSESSION OF ALCOHOLIC BEVERAGES ON THE GROUNDS OF A PUBLIC SCHOOL	2	M
40-6-253	POSSESSION OF OPEN CONTAINER OF ALCOHOLIC BEVERAGE WHILE OPERATING VEH	7	M
15-11-2.12	REVOCATION OF PROBATION/SUPERVISION	10	S
15-11-2.11	RUNAWAY-IN COUNTY	6	S
15-11-2.11	RUNAWAY-OUT OF COUNTY OR STATE	6	S
40-5-29	TRAFFIC VIOLATION	7	M
15-11-2.12(a)	TRUANCY	6	S
15-11-2.12(b)	UNGOVERNABLE	6	S
15-11-2.12	UNRULY	6	S
15-11-2.12(f)	VIOLATION OF AFTERCARE	10	S
15-11-2.12(f)	VIOLATION OF ALTERNATE PLAN	10	S
17-6-94	VIOLATION OF BOND/CONTEMPT OF COURT.	4	M
15-11-2(b)	VIOLATION OF PROBATION	10	S
15-11-2(b)	VIOLATION OF PROBATION	10	F
15-11-2(b)	VIOLATION OF PROBATION	10	M
15-11-2	VIOLATION OF SUPERVISION	10	S

